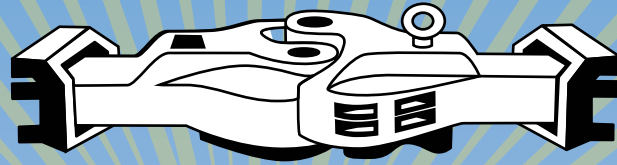


# LA COUPLER



[HTTP://WWW.LADIV-NMRA.ORG](http://www.ladiy-nmra.org)

WINTER 2016



**Save the Date!**  
**Spring Fling**  
**Members Appreciation Dinner**



Publication Information  
The L. A. Coupler

The official publication of the Los Angeles Division, Pacific Southwest Region (PSR). National Model Railroad Association (NMRA).

The LA Coupler is published quarterly by the Los Angeles Division of the National Model Railroad Association and is available online at: <http://ladiv-nmra.org>.

All materials, articles, and advertising must be submitted to the Editor and in an electronic format. Contact us for a copy of our submission guidelines. Advertisers may contact the Editor to request guidelines and a rate card. Subscribers with an e-mail address will automatically receive the PDF version. Copyright 2016, LA Division Pacific Southwest Region, National Model Railroad Association.

Permission to reprint granted to all affiliates of the NMRA. Others may request permission to reprint from the Editor:

Except for Official reports, opinions expressed are those of the author, and do not necessarily represent those of the L.A. Division, PSR, or the NMRA.

Thank you for supporting the Coupler !

Publication Team:

**Editor: Scott Sackett**  
1264 Alameda Ave.  
Glendale CA. 91201  
[essaness@pacbell.net](mailto:essaness@pacbell.net)

**Photographers:**

Sam Sackett  
Anita Maric

**Electronic PDF Distribution;**  
Pat & Mona Raymer

WINTER EDITION  
2016

FEATURES

Superintendent Report.....	3
Directors Report.....	4
Hello From the Website Guy .....	5
Financial Report.....	6
Fall Back Into Training.....	8
From the Past.....	11
LA Division "LA Junction" .....	12
Southern California Club Layout Schedule.....	32
Los Angeles Division Directory .....	33
Model Train & Railroad Events.....	35

LA COUPLER DEADLINES:

Winter Issue - December 1  
Spring Issue - March 1  
Summer Issue - June 1  
Fall Issue - September 1

The LA Coupler is also looking for submissions, articles, or photos. Please forward them to the Editor at:  
[\*\*essaness@pacbell.net\*\*](mailto:essaness@pacbell.net)

On the Cover...



The Powder Horn Ski Resort is open for the season at the Pasadena Model Railroad Club. A pair of Western Pacific locomotives in memoriam of Larry Helscher

# SUPERINTENDENTS REPORT

*To:*

Happy New Year to all our NMRA members in LA and Ventura counties! And also to all my model railroading friends everywhere!

Although I was a "lone wolf" in our hobby for a few years, mostly I have enjoyed the friendship and society of other people involved in model railroading. The NMRA was created to foster communication and friendships, and for me it has been fantastically successful.

All of our work is by volunteers, all over the USA and the world, save a very few employees at headquarters. So, we always need new volunteers, and welcome them. I always enjoy welcoming new model railroaders and "mentoring" them, showing them the benefits and enjoyment of the socializing aspects of our hobby.

I have talked with some folks over the years who don't like the NMRA, presumably because some perceived "officiousness" or something has turned them off. That's OK; everyone can have their own opinions. They will be welcome if they ever want to join.

Other reports in this newsletter have covered our activities last year, and those planned for the new year. We have been meeting every month to plan these activities, at 7 pm on the second Thursday of each month. All members and friends are welcome to attend and perhaps to volunteer to help. (Yes! We always need volunteers!)

Our Bylaws require four events a year. I have noticed that some other very active NMRA Divisions have some event every month. For example, San Diego Division has a local layout visit every month. Other ideas include club visits, layout operating sessions, railfan trips, and other fun activities in addition to our usual ones (which I think are quite successful). We are open to ideas, and I would like to hear about them. Email me at: [mike@corbu.us](mailto:mike@corbu.us)

Cheers! Have a fun and enjoyable new year in 2017! Run trains!

Mike O'Brien  
.....  
Superintendent, Los Angeles Division, Pacific Southwest Region,  
National Model Railroad Association

FORM  
21

## DIRECTOR'S REPORT

FORM  
21

Hello and Happy Holiday greetings to all! 2016 has been quite a year and seems to have flown by so fast. We installed our new Superintendent, Mike O'Brien, at the Member Banquet. Then it was on to SpringRail in April, all the while planning the "L.A. Junction" regional convention which took place in September. We finished out the year in October with the "Freight Fright" event at the South Coast Botanic Gardens in Rancho Palos Verdes. These events (minus the convention) have been our annual standard for years now, and the advisory board would like to make some changes in the coming year. No, we are not eliminating any of these events. ***We are adding more!*** The L.A. Division would like to reach out to local clubs, hobby shops and individual layout owners who would be interested in co-hosting smaller one day events throughout the year. This would be a great opportunity to introduce new people to your layout or shop. These would be informal get-togethers, possibly with a clinic or show and tell. If you are interested, please contact any of the people listed on The Coupler directory.

Speaking of upcoming events, our first for 2017 is the Membership Appreciation Banquet on Saturday, February 4th at 6:00 PM. We are changing our venue back to the Daily Grill in Burbank, the same location that we used in 2015. It is directly across from Bob Hope airport on Hollywood Way and about a block away from the MetroRail station. Our guest speaker this year is our very own "Website Guy", ***Tim Johnson***. He will be presenting a photographic tour of his railfanning activities in the Pacific Northwest. Tim is a very entertaining speaker and his photos are great! Don't miss it!

Also on the agenda at the Membership Appreciation Banquet will be amendments to the L.A. Division by-laws. We will specifically address amendments to the voting process. The Pacific Southwest Region successfully used an electronic voting process in the regional election for 2016. The electronic voting system is much more affordable and efficient than the direct mailing process used in the past. Ballots are mailed to members without email access, so no one is left out. The L.A. Division by-laws need to be updated to take into consideration these technological advances. Other amendments to the by-laws are simple format clean-ups. The amendments to the by-laws are shown below, the by-laws as amended in 2009 are available on the L.A. Division website: [www.ladiv-nmra.org](http://www.ladiv-nmra.org).

**Article II, Section B, Subsection 4,**

*4. Voting: Each member of the LADIV shall be entitled to one vote on all matters submitted to a vote of the members. The deadline set for electronic and/or mail ballots shall not be less than thirty (30) nor more than sixty (60) days from the date of publication in the LA Coupler. Article III, Section E, Subsection 3*

*3. The remaining elected officials shall appoint a member to temporarily fill the vacancy until the next regular election. Elections to fill such vacancies shall be by electronic and/or mail ballot.*

**Article VI, Section 2,**

*2. These By-Laws may also be amended by a two-thirds majority of the votes cast in an electronic and/or mail ballot, providing that a notice shall have been mailed to all LADIV members at least thirty (30) days prior to the ballot deadline.*

(Continued on Page 9)



---

---

# HELLO FROM THE WEBSITE GUY

---

---

## Model Train Memories

As I write this there is just a little more than a week before Christmas. Recently I have been thinking about the model trains I had as a kid, more importantly the ones I got as Christmas gifts. As I thought back on Christmases past, I realized just how much my fond memories were influenced by model trains. For example, one year my parents got me a Styrofoam N scale sceneded figure 8 layout, which included track and buildings. Looking back it was pretty basic but nicely designed and very fun to have. Later, as a teenager the highlight of my Christmas was getting enough money to go to the mall, which in those days had a hobby store that sold model trains. I couldn't always afford what appealed to me most but I always found something that I would enjoy having. One year I really wanted an Atlas SD35 but the Life Like F7A did just fine. Going further back, my very first Christmas train set was a Marklin (my family was living in Germany at the time), which I remember being very colorful and sturdy. To this day when I see Marklin model railroad equipment I am reminded of that train set. I know many of you too have fond memories associated with model or toy trains at Christmas time. Perhaps it was that first HO set or a Lionel train around the Christmas tree. Things have changed quite a bit since I was a kid, but I have noticed that there are still people that want to put trains and Christmas together offering people young and old the chance to have fond memories associated with these two things. Just tonight a good friend, his son and I went to LAUPT to see ATSF steam locomotive 3751, which was on display. The event was a Toys for Tots toy drive and it brought all kinds of people out who might not normally think about trains at Christmas time. As you celebrate this Holiday season hopefully

you will think about the good memories that model or toy trains gave you. I hope you all are enjoying this Holiday season, that 2017 will be a wonderful year and that you will come out and join us for the great events the LA Division has planned for the upcoming year (The annual banquet on Feb. 4th and SpringRail on March 18th. to name a couple).



Tim Johnson  
.....  
*Webmaster*

Los Angeles Division PSR NMRA



# FREIGHT FRIGHT - 2016

South Coast Botanic Gardens in Rancho Palos Verdes.





---

# FREIGHT FRIGHT - 2016

South Coast Botanic Gardens in Rancho Palos Verdes.

---



# FINANCIAL REPORT

7:42 AM  
 12/30/16  
 Accrual Basis

## LADivPSRNMRA Balance Sheet As of December 30, 2016

	Dec 30, 16
<b>ASSETS</b>	
<b>Current Assets</b>	
<b>Checking/Savings</b>	
<b>Checking</b>	
Advisory Board Expenses	682.43
<b>Total Advisory Board</b>	682.43
Bank Fees	641.81
Banquet Expenses	277.71
<b>Total Banquet</b>	277.71
Build a Memory Income	-1,200.89
<b>Total Build a Memory</b>	-1,200.89
Childrens Coloring Boxcar Expenses	506.37
<b>Total Childrens Coloring Boxcar</b>	506.37
Elections Expenses	913.89
<b>Total Elections</b>	913.89
Freight Fright Modular Meet Expenses	421.50
Income	-558.73
<b>Total Freight Fright Modular Meet</b>	-137.23
Regional Convention Expenses	29,025.76
Income	-29,433.44
<b>Total Regional Convention</b>	-407.68
SpringRail Expenses	4,648.71
Income	-5,724.07
<b>Total SpringRail</b>	-1,075.36
Checking - Other	7,503.96
<b>Total Checking</b>	7,705.01
<b>Savings</b>	
Intrest	-2.78
Savings - Other	5,103.42
<b>Total Savings</b>	5,100.64
<b>Total Checking/Savings</b>	12,805.65
<b>Total Current Assets</b>	12,805.65
<b>TOTAL ASSETS</b>	<b>12,805.65</b>
<b>LIABILITIES &amp; EQUITY</b>	
<b>Equity</b>	
Opening Balance Equity	12,805.65
<b>Total Equity</b>	12,805.65
<b>TOTAL LIABILITIES &amp; EQUITY</b>	<b>12,805.65</b>

James L. Keena  
 .....  
 Chief Clerk/Paymaster  
 LA Div. PSR NMRA



*(Continued from Page 4)*

According to L.A. Division by-laws, a two-thirds majority of the attendees at the Annual Meeting of Members (Membership Appreciation Banquet) can approve these amendments. Hard copies of the present and amended by-laws will be available at the banquet. If you want your opinion heard on these matters, come to the meeting and vote.

Following the Banquet, our next planned event is SpringRail 2017, taking place on Saturday, March 18th. This year we will be moving to a new venue in Whittier. More about this coming soon!

Mona and I wish you all a joyous holiday season and a happy and healthy New Year!

Pat Raymer  
.....  
Director

Los Angeles Division PSR NMRA



## MINIATURE RAILROADING

Every single page devoted to the interests of model-railroad fans

MINIATURE RAILROADING was created to meet a universal demand for a magazine that would be 100% model railroads. Enthusiastic responses from thousands of hobbyists prove that it meets this demand effectively. Layout plans, scenery-building, tinplate conversions, bridge and accessory drawings and many other features make it the premier magazine for the out-and-out railroader. Packed full of helpful hints, suggestions, and ideas, it is indispensable to the practical man who builds or operates a layout.

MINIATURE RAILROADING is not sold on newsstands, so send 15¢ to the address below for your sample copy. Better still, enclose your check or money order for \$1.50 and you will receive a full year's subscription—twelve big issues.

**MINIATURE RAILROADING**

110-H West 42 Street

New York City

Please add to your calendars that the Los Angeles Division of the NMRA will hold their annual SpringRail Event on Saturday, March 18, 2017 from 8:00 A.M. to 4 P.M. Event will include Swap Meet, Clinics, Workshops, PowerPoint Presentations, Model and Photo Contests, Fellowship, Lunch and Hobo Auction. Donuts, Coffee along with pizza lunch will be available. New Location at the Whittier Church of the Nazarene at 8221 College Avenue, Whittier, CA 90602. Entire event \$20 plus \$7 for pizza lunch and drink. Free lunch if you bring model for display or contest judging. Admission for Swap Meet Only is \$3 per person. Swap Meet table space available at \$10 each.

For information contact James Keena at [pjkeenawhittier@msn.com](mailto:pjkeenawhittier@msn.com)



With winter time upon us the daylight is shorter, the nighttime is longer and typically the temperature is lower. There is more time to work indoors on that model you been waiting to build, add that additional track to the layout, or cover that plywood with scenery.

It is also the time for family gatherings and the joys of sharing during the holiday season. Time to create new memories and reflect on the ones that have come before. However you celebrate, may the opportunities to express love and caring to others around you be many. Don't be in a rush to go places and just do things, life is like a long train ride where you enjoy the journey, not just the destination.

Sincerely,

James L. Keena  
Chief Clerk/Paymaster  
LA Div. PSR NMRA



Los Angeles Division NMRA  
Next Board Meeting  
**Thursday, January 14<sup>th</sup>, 7:00 PM**  
619 Hahn Ave.  
Glendale CA 91203

## TOO MANY TRAINS???

Recently at the Los Angeles NMRA Convention, there was a spirited and engaging conversation regarding buying items in our hobby. Specifically, can you have too many trains? With the multitude of online vendors, local hobby shops, and our connections with fellow model railroads, it is ever easier to shop and buy whatever our whim may be. Case in point, a member had been pining and saving for a unique Alco U50 locomotive which he wanted to model for sometime, after which sometime he was able to get a reasonable price. For awhile, this particular locomotive was the apple of his eye, and a particular source of pride. But as time went on, he spotted a sale of new modern Diesel locomotives online, and soon those engines became the object of his fascination and desire, and the U50 took a back seat. So the question remains - does buying new trains or equipment diminish what we already have? Can we really have too much?

If you have an opinion on this, we welcome your thoughts. Please send them to the editor @ [essaness@pacbell.net](mailto:essaness@pacbell.net). Please put in the subject line "Attn. Coupler Forum".



Photo © Anita Maric

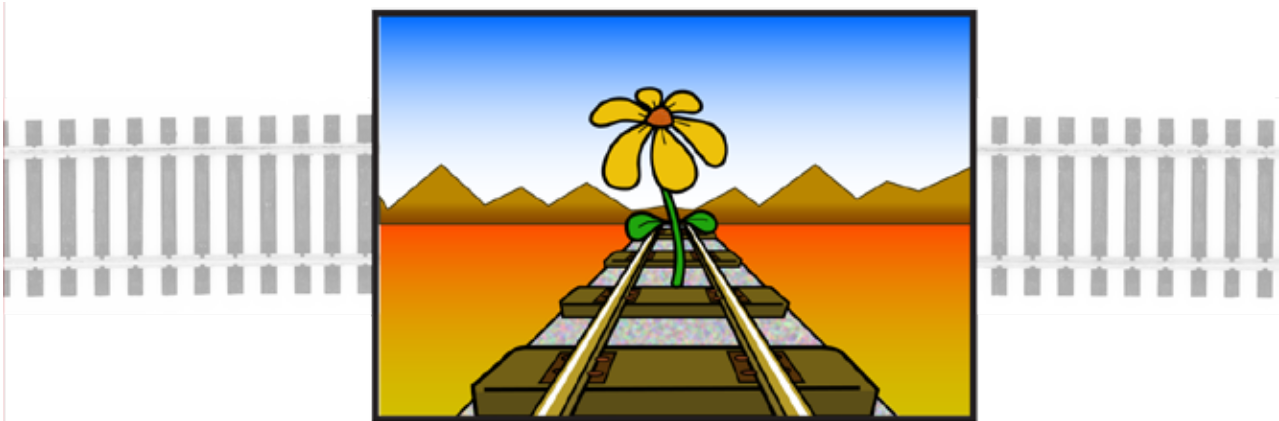


SAVE THE DATE!

# Los Angeles Division Member Appreciation Dinner Feb 4<sup>th</sup> - 2017



# SpringRail 2017 March 18<sup>th</sup> - 2017



Swap Meet • Clinics • Lunch • Hobo Auction

*Details and Location to be Announced.*

Mark your Calendar - Don't Miss Out!

---

---

# FROM THE ROUNDHOUSE

---

---



## WHAT'S HAPPENING AT YOUR LOCAL MODEL RAILROAD CLUB:

### *Santa Susana Railroad Historical Society*

The Santa Susana Railroad Historical Society underwent several improvements during the past year. An overhead LED lighting system which mimics outdoor lighting from dawn to dusk was installed. In the upcoming months, scenery lighting will also be added to the programmable controller in order to enhance lighting effects in buildings and street lighting.

The scenery committee completed work on the front peninsula portion of the layout. This work includes a revamped interpretation of Corriganville; popular movie ranch location in the middle of the 20th century. The ranch also was a popular weekend attraction for visitors to experience wild west shows. The location, now a park is less than a mile from the former Southern Pacific depot in Santa Susana Park where the layout is located.. Much of the original movie ranch was destroyed in a wild land fire in the 1970s but members have recreated diorama of the location using historical documents and photos.

A six-stall roundhouse and 110' turntable has been added in the layout's Dunsmuir area. Work also continues on scenery and trackwork in the layout's LAUPT area. A locomotive service facility has been added, along with background buildings for various railroad related businesses.

Plans for the upcoming year include an upgrade to scenery in the San Ardo and Salinas section of the layout. Additional track has already been installed for a sugar beet refinery in Salinas in order to enhance operating sessions. The scenery committee is in the process of researching appropriate buildings and scenery features to enhance the visual aspects of this area. Plans to add a background photo mural on the wall behind this region will take place in early 2017. Work also continues to progress on a multi-year project to add a layout-wide signaling system.

Dave Putnam



**Los Angeles Division, PSR, NMRA  
Annual Membership Meeting and  
Appreciation Banquet**

Daily Grill  
2500 Hollywood Way  
Burbank, CA 91505

\$45 per Person

**Menu Choices**

**First Course**

Romaine and Kale Caesar Salad or  
Mixed Green Salad

**Entrée Choices**

Angel Hair Pasta Pormodoro,  
Home-Style Meatloaf, or  
Grilled Herb Chicken Breast

**Sides**

Grilled Vegetables and Mashed Potatoes

**Dessert**

Cinnamon Apple Walnut Crisp with Vanilla Ice Cream

**Water Included with Meal**

**Additional Charge for all Non-Alcoholic and Alcoholic Beverages**


For Reservations Please Contact Chief Clerk/Paymaster James Keena  
at [pjkeenawhittier@msn.com](mailto:pjkeenawhittier@msn.com) or (562) 325-3846



# FROM THE PAST

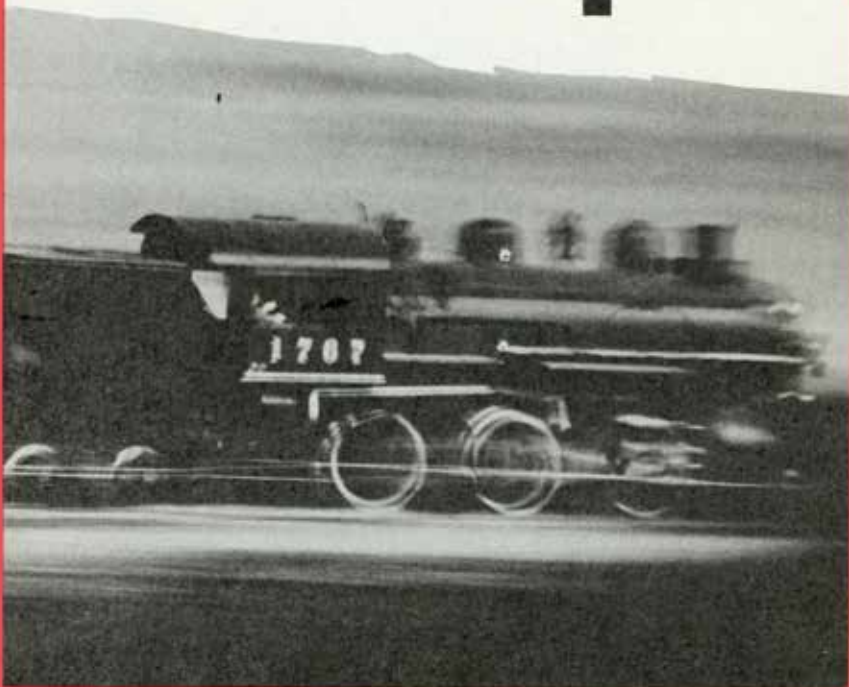
LOS ANGELES DIVISION

VOLUME 13 - No. 4 - OCT/NOV/DEC 1980



PCR - NMRA

# the LA Coupler



**VOTE NOW** | Your Ballot Inside

**ANNUAL WINTER MEET**  
November 22, 1980

For Details and other LAD Activities, see pages 5-7, 16

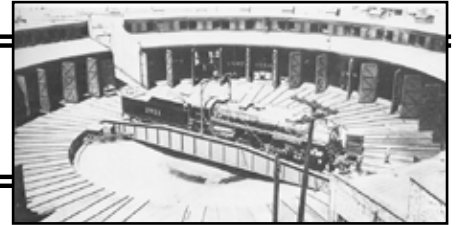
---

---

# FROM THE ROUNDHOUSE

---

---



## WHAT'S HAPPENING AT YOUR LOCAL MODEL RAILROAD CLUB.

### *Sierra Pacific Railroad Museum*

First of all, we are now operating as the Sierra Pacific Railroad Museum, Inc. Most of the assets have not been transferred to the new corporation, but will probably happen sometime after April 30, 2017.

The DCC conversion is proceeding nicely. The western division from Midway to Zion has been completed. The mainline turnout machines were changed over to tortoise and are working as expected. The turnout machines in Zion yard have not been replaced and continue to operate under the old system. These will be replaced sometime next year, probably after May. The turnouts in east Midway yard have been replaced along with the mainline eastern division turnouts to Echo. We should have the eastern division converted to DCC to Echo by the middle of January and possibly completed into Alhambra at the same time. We will begin extensive testing of the eastern division at that time.

We did operate an open house during November

with the railroad running from Midway to Zion. Thanks to channel 5 for the coverage which gave us outstanding attendance and cash flow, even though we were only open for two Tuesdays and one Saturday and Sunday. We should operate the entire mainline for the open house in April –May. The operators were mostly inexperienced with DCC and the railroad locations, so more training is required. However, they did as well as can be expected under the circumstances. We are operating from both the crow's nest, as we did before, and with walk around. We will need to get some type of portable radios in order to communicate with the dispatcher.

The scenery crew has been busy making improvements and adding a few new structures.

I feel that it was amazing that we completed as much as we did in about 8 months.

Bruce Bloch



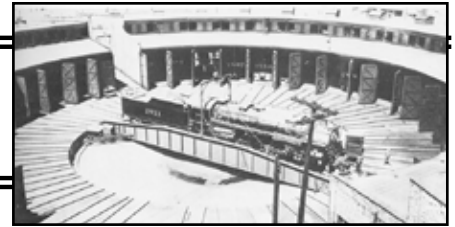
---

---

# FROM THE ROUNDHOUSE

---

---



## WHAT'S HAPPENING AT YOUR LOCAL MODEL RAILROAD CLUB.

### ***Highland Park Society of Model Railroad Engineers Inc.***

The Highland Park Society of Model Railroad Engineers Inc. is a group of model railroaders who seek to increase their over-all pleasure of the hobby through informed association. The organization was founded in April 1948, under the auspices of Al's Hobby Shop in the Highland Park section of Los Angeles. The original group included modelers in several different scales. HO scale prevailed and a 20 x 35 foot layout was started in space provided by the hobby shop.

The Society prospered, and as time went by, improved its reputation in both the community and the model railroad fraternity. During the 1951 Christmas season the Society constructed and presented a complete model railroad layout to the Highland Park Optimist Boys Home. In 1959, with the financial aid of the three major railroads serving Los Angeles, the Society built, operated and staffed a major display at the Annual Home Show held in the Pan Pacific Auditorium. A principal tenant of the organization is to promote model railroading as a hobby, particularly to impress the youth of our community with a wholesome pastime. The club was called upon by the Los Angeles County Sheriff Juvenile Division to counsel with the Nellis Home for Boys (a former medium security institution for juveniles) to help them in the construction of a model layout.

In the fall of 1959 the hobby shop went out of business and the Society was forced to vacate its home and a layout representing 10 years of love and labor. Meetings were held at members' homes, a city park building, restaurants, and anywhere the group could congregate. Finally, in October 1962, the Corporation purchased the property presently occupied by the Society. The next three years were

to see the complete refurbishing and remodeling of a small one-bedroom frame house on the property and the construction of an additional 1,750 square feet of building designed from the ground up for a model railroad. All construction was done by the members themselves working from dawn to dusk on weekends. The members designed the building, went through zone variance hearings and finally rezoning hearing in order to have a permanent home. Never again would the Society be forced to vacate its quarters.

Along the way the Society built a complete operating layout inside a trailer which toured shows and meets throughout California. Members of the Society also built, under contract, a layout complete with locomotives and rolling stock for entertainer Frank Sinatra.

Through those lean and hard years since losing the first home, Society membership remained phenomenally stable and with no net loss of membership. This is due to the fact that the membership has become a very close group of friends and untie all of the family through social events such as Hobo Cookouts, Annual Awards Banquets, and other special events.

The Society is now busy constructing a railroad empire over which some 3,500 feet of track will stretch from a seaport to majestic mountains reaching from the floor of the room to some 10 feet into the air. The walls are disappearing under scenic murals. Trains of the Highland Pacific Railroad will be operated in prototype fashion from "locomotive cabs" following timetables governed by "scale time" clocks. Dispatching of trains will be done by a prototypical Centralized Traffic Control Center. Prototype styled operating sessions utilizing timetables along with car cards and waybills occur quarterly. A separate lumber railroad, narrow gauge and traction interurban lines will be incorporated

*Continued on Page 17*



---

---

# FROM THE ROUNDHOUSE

---

---



*Continued from Page 16*

into the overall design. Special effect lighting will insure realism by adding daylight, dusk, nighttime and dawn.

All of this represents imagination, elaborate dreams, initiative, hard work, and above all a dedicated love of the hobby and its fellowship—this is the Highland Park Society of Model Railroad Engineers Inc.

We are open year-round on almost every Wednesday night from 7:00 to 10:00 P.M. Memberships are always available to become part of this group of model railroaders where you can enjoy fellowship, model railroad craftsmanship, sharing and learning. Come and join the fun. We have one of the lowest monthly dues in the Los Angeles area at just \$30 per month.

The club has been in existences for more than 67 years, but we are still improving and expanding the Highland Pacific Railroad. Currently we are in the process of implementing block assigned DC and NCE DCC throughout the entire railroad. Through our block assignment control method, both DC and

DCC locomotives can operate together on along separate portions of the railroad. Your prized DC locomotives can work alongside new advanced DCC decoder and sound equipped locomotives. This way no one is left out of the fun of model railroading. The Highland Pacific never charges an admission fee for our annual open houses, but donations are always welcome. We are here to promote the hobby of model railroading and have fun at the same time. Special thanks to Arie Korporaal for compiling the history of the Highland Park Society of Model Railroaders, Inc. Additional information is available on our club website:

*<http://www.highlandpacifierr.com>*

Sincerely,

James Keena  
Paymaster  
Highland Pacific Railroad



---

---

# FROM THE ROUNDHOUSE

---

---



## WHAT'S HAPPENING AT YOUR LOCAL MODEL RAILROAD CLUB.

### *Glendale Model Railroad Society*

The year 2017 was a year of many changes for the venerable Glendale Model Railroad Club. For one thing, we aren't the GMRRC "Club" anymore. We have reincorporated ourselves into the GMRRS "Society", an IRS-approved 501c3 charitable trust, which among other things, allows us to accept donations of cash, equipment, or other valuables. The rolling stock, which might come from estates or a collector winnowing his fleet, is then sold on e-Bay to raise funds for the Society - money in the bank.

We're going to need the cash, because 2017 is going to bring even more change. We have been a tenant of Glendale's Fremont Park for more than 60 years, tucked away in a quiet corner near the tennis courts and the power substation. In 2017, we'll be moving. The Parks and Recreation folks are bankrolling a

major renovation of the park. We'll still be a park asset, but the architect's plans call for us to move to the other side of the park, either by moving our existing building or by constructing a new clubhouse. Either way, our current layout will not survive the move, so we'll be designing and building a replacement, this time designed from scratch for operations under DCC control (or whatever replaces that as the latest technology). We are, of course, looking for new members who can help us tackle the biggest job since the clubhouse burned down in the 1963, and had to be replaced from the ground up.

Kerry Sullivan

Glendale Model Railroad Society  
[www.gmrrc.org](http://www.gmrrc.org)  
email: [gmrrc@gmrrc.org](mailto:gmrrc@gmrrc.org)



# 2016 LOS ANGELES DIVISION DIRECTORY

---

***Division Superintendent - Michael O'Brien***

1070 N. Marengo Ave. Pasadena CA. 91103  
(626) 798-7087 mikeobrien@corbu.us

***Division Director - Pat Raymer***

2655 El Caminito La Crescenta, CA 91214  
(818) 957-7351 director@ladiv-nmra.org

***Convention Chairman - Carl Heimberger***

1256 Old Hickory Rd., Corona Ca. 92882  
Cell: (951) 256-1319. cjheimberger@gmail.com

***Chief Clerk/Paymaster - James Keena***

12341 Heritage Springs Drive  
Santa Fe Springs, CA 90670  
Cell: (562) 325-3846 pjkeenawhittier@msn.com

***Membership - Ron Varnell***

2741 Plaza del Amo. #213 Torrance, CA 90505  
310-213-1697 membership@ladiv-nmra.org

***Member Aid Chairman - Lloyd Lehrer***

401 9th St. Manhattan Beach, CA 90266  
(310) 951-9097 lloydlehrer@gmail.com

***L.A. Coupler Editor - Scott Sackett***

1264 Alameda Ave. Glendale CA. 91201  
(818) 846-1735 essaness@pacbell.net

***L. A. Division Webmaster - Tim Johnson***

10859-1/2 Kling St. North Hollywood CA 91602  
(818) 679-3623 airplanedad@yahoo.com

***Achievement Chair - Michael O'Brien***

1070 N. Marengo Ave. Pasadena CA. 91103  
(626) 798-7087 mikeobrien@corbu.us

***Flagstop - Lindsay Smith***

909-599-0182 wlindsays31@verizon.net

please also refer to: PSR Dispatch 1446 Paseo Gracia San Dimas, CA 91773-3915

***Raillette Chair & Business/Circulation Manager positions are VACANT***



**NATIONAL MODEL RAILROAD ASSOCIATION, INC ®**

P.O. Box 1328  
 Soddy Daisy, TN 37384-1328  
 Phone: (423) 892-2846 Fax: (423) 899-4869  
 Email: nmraops@nmra.org Website: www.nmra.org

**RENEWAL NOTICE**

<b>NMRA Membership Type</b>	<b>1 Year</b>	<b>Total</b>
<b>Member with NMRA Magazine Subscription</b> ~ All Rights and Benefits; includes NMRA Magazine	\$ 66.00	
<b>Member without NMRA Magazine Subscription</b> ~ All Rights and Benefits; does not include NMRA Magazine	\$ 44.00	
<b>Family</b> ~ Spouse or minor child of above member in good standing; <b>DOES NOT</b> include NMRA Magazine or voting rights. <u>Provide</u> member's name below. Name: _____ DOB: _____	\$ 9.00	
<b>Student</b> ~ Anyone under 18 years or student between 19-25 years of age All rights and benefits and includes NMRA Magazine. DOB: _____	\$ 32.00	
<b>Sustaining</b> ~ Mandatory for group memberships (Clubs, Associations, Businesses) All Rights and Benefits and includes NMRA Magazine.	\$110.00	

<b>Region Subscription Options For Member</b>					
Circle the option of your Choice					
<b>Subscription Type</b>	<b>1 Yr</b>	<b>Total</b>	<b>Subscription Type</b>	<b>1 Yr</b>	<b>Total</b>
21 ~ Northeastern Subscription	\$ 7.00		30 ~ Mid Eastern Subscription	\$ 9.00	
23 ~ North Central Subscription	\$10.00		33 ~ South Eastern Subscription	\$10.00	
24 ~Thousand Lakes Subscription	\$10.00		36 ~ Sunshine Subscription	\$10.00	
26 ~ Pacific Coast Subscription	\$ 8.00		* ~ Out of regions subscriptions may be charged additional fees by Region		
28 ~ Midwest Subscription	\$ 6.00				

<b>Contact Info</b>	Phone: _____
	E mail: _____

<b>PAYMENT</b>	NMRA Membership Total:	\$
	Regions Subscription Total:	\$
	Merchandise Order Total:	\$
	<b>PLEASE INCLUDE SHIPPING</b>	\$
	Donation Amount:	\$
	<b>Grand Total:</b>	<b>\$</b>

Go to the NMRA website at [www.nmra.org](http://www.nmra.org) and visit the online store for the latest merchandise updates  
 We also accept MasterCard, Visa, American Express and Discover

Credit Card No.                 Verification Code

Expiration Date:       Signature \_\_\_\_\_

**Return entire renewal notice along with your payment • All Payments must be made in U.S. FUNDS ONLY • Make checks payable to NMRA**



# MODEL TRAIN & RAILROAD EVENTS:

## 2017

### January

- 2nd - 8th ***(Tuesdays-Sundays) - 2nd Annual Muzeo Museum Holiday Trains, Anaheim.***
- 14th ***San Diego Division Event, Location TBA.***
- 14th - 15th ***Great Train Show, Costa Mesa.***
- 21st ***Pacific Railroad Society Excursion To Perris, Los Angeles.***
- 21st - 22nd ***Orange Empire RR Museum, Behind the Scenes. Perris, Los Angeles.***
- 28th ***San Luis Obispo Railroad Museum Movie Event, San Luis Obispo.***
- 30th ***La Mesa Club in San Diego Railroad Museum will hold its TT&TO 1950's  
Operating Session.***

### February

- 4th ***LA DIV NMRA Members Appreciation Banquet . Daily Grill, Burbank, CA***
- 4th ***Santa Fe Railway Historical & Modeling Society Mini Meet, West Covina.  
Christ Lutheran Church of West Covina [Ctschult@aol.com](mailto:Ctschult@aol.com).***
- 11th ***San Diego Division Event, Location TBA.***
- 11th - 12th ***World's Greatest Hobby on Tour, Fairplex, Pomona.***
- 17th - 26th ***Coachella Valley Model Railroaders/Riverside County Fair National Date Festival. Indio***
- 19th ***California Express Railroadiana Show, Buena Park.***
- 25th ***Model Railroads Of Southern California Layout Tour #51, Riverside-San Bernardino.***
- 25th ***Roundhouse Gang Swap Meet, San Bernardino (Tentative Date).***

### March

- 4th ***Orange Empire Railway Museum Swap Meet, Perris CA.  
9 am to 2 pm. (951) 943-3020 Price: \$7 for ages 12 and up, \$5 for ages 5 - 11, or included  
with an all-day ride pass \$12, ages 12 and up, \$8 ages 5 - 11, 4 and under free.***
- 4th - 5th ***Golden Empire Historical & Modeling Society Train Show, Bakersfield***
- 11th ***San Diego Division Event, Location TBA***
- 11th ***Coachella Valley Model Railroaders Open House, Indio***
- 18th ***Los Angeles Division Spring Rail, Whittier  
Church of the Nazarene at 8221 College Avenue, Whittier, CA. Entire event \$20 plus \$7 for  
pizza lunch and drink. Free lunch if you bring model for display or contest judging.  
Admission for Swap Meet Only is \$3 per person. Swap Meet table space available at \$10  
each. James Keena at [pjkeenawhittier@msn.com](mailto:pjkeenawhittier@msn.com).***
- 18th - 19th ***Orange Empire Railway Museum Family Steampunk Carnival, Perris CA.  
\$15 for ages 12 and up and \$10 for ages 5-11. SCRM/OERM member pricing is \$8 for ages  
12 and up and \$5 for ages 5-11***
- 24th - 26th ***Calrailfans Trackside Meet, Tehachapi***
- 25th ***Western Prototype Modelers Meet, Bellflower***

# MODEL TRAIN & RAILROAD EVENTS:



## March 2017 (Cont'd)

- 25th **Santa Susana RR Historical Society Swap Meet**, Simi Valley CA.  
0700 to 1000. Santa Susana Park Pavilion. 6503 Katherine Road, Simi Valley, CA.  
Link to map: <http://tinyurl.com/ptbo8zm> . Vendor table info, contact David Putnam, (661) 753-6006 or email: [events@santasusannadepot.org](mailto:events@santasusannadepot.org) <http://www.santasusannadepot.org/Clubhome.html>  
Open House starts at 10:00 a.m. to 4:00 p.m.
- 25th **Western Prototype Modelers 28th Annual Meet**, Bellflower CA.  
9am to 4pm. Encounter Christian Church, 10012 Ramona St. Bellflower, Ca. 90706.  
Info (760) 721-3393
- 31st /April 1st **Cajon Division Spring Meet**, Temecula CA.

## April

- 1st **Cajon Division Spring Meet**, Temecula CA.
- 1st,2nd & 8th, 9th **Orange Empire Railway Museums Day Out With Thomas**, Perris CA.  
Purchase tickets during the month of December and save \$2 per ticket on off-peak tickets.  
If you purchase your tickets by calling the museum office (951-943-3020) you will save the \$3.65 per ticket online order fee.
- 8th **San Diego Division Event**, Location TBA
- 19th - 23rd **NMRA PCR Convention "Daylight Express."** Double Tree by Hilton,  
3100 Camino Del Rio Court, Bakersfield CA <http://www.pcrnmra.org/conv2017/>
- 22nd,23rd & 25th - 30th\* **San Bernardino County Museum Train Days**, Redlands (\*Tentative dates)

## May

- 6th - 7th **Railroad Days**, Fullerton CA.
- 6th - 7th **High Desert Modular Model Railroad Club Show**, Lancaster
- 13th **San Diego Division Event**, Location TBA
- 14th **Belmont Shore Lines & Angels Gate Hi-Railers Swap Meet**, San Pedro
- 14th - 15th **Belmont Shore Lines & Angels Gate Hi-Railers Joint Open Houses**, San Pedro CA.  
10 AM to 4 PM. Swap meet on May 14 only from 7 AM to Noon. All events free and located in Angels Gate Park, 3601 S. Gaffey St., San Pedro.  
For other info., contact Bill Costley, 310-831-1140 or [bbcostley@earthlink.net](mailto:bbcostley@earthlink.net)
- 20th **Santa Susana RR Historical Society Swap Meet**, Simi Valley  
0700 to 1000. Santa Susana Park Pavilion. 6503 Katherine Road, Simi Valley, CA. Link to map: <http://tinyurl.com/ptbo8zm> . Vendor table info, contact David Putnam, (661) 753-6006 or email: [events@santasusannadepot.org](mailto:events@santasusannadepot.org) <http://www.santasusannadepot.org/Clubhome.html>  
Open House starts at 10:00 a.m. to 4:00 p.m.



# MODEL TRAIN & RAILROAD EVENTS:

## July

12th-16th **San Luis Obispo Model Railroad Assn. Operating Display**, Santa Maria  
30th /Aug 6th **NMRA Convention**, Orlando, FL.

## August

26th **Santa Susana RR Historical Society Swap Meet**, Simi Valley  
0700 to 1000. Santa Susana Park Pavilion. 6503 Katherine Road, Simi Valley, CA. Link to map:  
<http://tinyurl.com/ptbo8zm> . Vendor table info, contact David Putnam, (661) 753-6006 or email:  
[events@santasusannadepot.org](mailto:events@santasusannadepot.org) <http://www.santasusannadepot.org/Clubhome.html>  
Open House starts at 10:00 a.m. to 4:00 p.m.

## September

9th-10th **High Desert Modular Model Railroad Club Show**, Newhall.  
13th - 16th **NMRA PSR Convention**, Ontario, CA.  
16th **Pacific Southwest Region/NMRA Swap Meet**, Ontario.

## October

12th - 15th **Central Coast RR Festival Layout Tour**, San Luis Obispo & Northern Santa Barbara Counties.  
13th - 15th **Central Coast RR Festival**, San Luis Obispo & Northern Santa Barbara Counties.  
28th - 29th **NMRA LA Division Freight Fright**. South Coast Botanical Gardens, Palos Verdes.

## November

4th **Santa Susana RR Historical Society Swap Meet**, Simi Valley  
0700 to 1000. Santa Susana Park Pavilion. 6503 Katherine Road, Simi Valley, CA. Link to map:  
<http://tinyurl.com/ptbo8zm> . Vendor table info, contact David Putnam, (661) 753-6006 or email:  
[events@santasusannadepot.org](mailto:events@santasusannadepot.org) <http://www.santasusannadepot.org/Clubhome.html>  
Open House starts at 10:00 a.m. to 4:00 p.m.



# MODEL TRAIN & RAILROAD EVENTS:



2018

## March



3rd - 4th *Golden Empire Historical & Modeling Society Train Show*, Bakersfield.

## July



30th /Aug 6th *NMRA Convention* Kansas City MO

## September



5th - 8th Pacific Southwest Region Convention, San Diego

