

LA COUPLER



<http://www.ladiv-nmra.org>

Spring 2014



SpringRail is Coming!



Publication Information
The L. A. Coupler

The official publication of the Los Angeles Division, Pacific Southwest Region (PSR). National Model Railroad Association (NMRA).

The LA Coupler is published quarterly by the Los Angeles Division of the National Model Railroad Association and is available online at:

<http://ladiv-nmra.org>.

All materials, articles, and advertising must be submitted to the Editor and in an electronic format. Contact us for a copy of our submission guidelines.

Advertisers may contact the Editor to request guidelines and a rate card.

Subscribers with an e-mail address will automatically receive the PDF version. Copyright 2014, LA Division Pacific Southwest Region, National Model Railroad Association.

Permission to reprint granted to all affiliates of the NMRA. Others may request permission to reprint from the Editor:

Except for Official reports, opinions expressed are those of the author, and do not necessarily represent those of the L.A. Division, PSR, or the NMRA.

Thank you for supporting the Coupler !

Publication Team:

Editor: Scott Sackett
1264 Alameda Ave.
Glendale CA. 91201
essaness@pacbell.net

Photographers:
Michael O'Brien
Michael Allee

Electronic PDF Distribution;
Pat & Mona Raymer

SPRING EDITION

APRIL 2014

FEATURES

Superintendent Report	3
Directors Report	4
Hello From the Website Guy.....	4
Financial Report	5
Station Stop	6
Notes From the Passenger Car.....	7
From the Past	11
Los Angeles Division Directory	14
Model Train & Railroad Events	16

LA COUPLER DEADLINES:

Winter Issue - December 1

Spring Issue - March 1

Summer Issue - June 1

Fall Issue - September 1

The LA Coupler is also looking for submissions, articles, or photos. Please forward them to the Editor at;

essaness@pacbell.net

On the Cover...



Mike DeGhetto and Ted enjoy a sale at the 2013 SpringRail.
Photo by Michael O'Brien.

SUPERINTENDENTS REPORT

To:

You should notice a change or two in this issue of the "Coupler." I want to thank Andy Jackson, our previous editor, came through and volunteered to do the job when we had no one stepping up to handle the job. He did a great job of getting it published once the articles were submitted, and felt that it was time to move onto other things. His railroad-ing interest is the Los Angeles Junction Railway (LAJ). So now, we welcome Scott Sackett as our new editor.

Let me introduce what, as Superintendent, I hope to accomplish during my term. It is a simple statement but a rather large challenge, "Help bring about a more active Division." I say help because it is you, the members, who determine how active the division will be by your participation in activities provided by the division.

The division doesn't have a board of directors to run the Division, there are only two elected positions in the division Superintendent & Chief Clear/Paymaster. What we do have is an Activities-Advisory Board made up of division members just like you. Presently there are nine division members (volunteers) attending these meetings besides the elected officials. We'd like to have more members attending. It would increase the ideas and decrease the workload for all participating. One way to find out if you'd like to participate, test the track so to speak, is to volunteer at the upcoming SpringRail. No job would be complicated or last for a long time. It could be as easy as introducing a clinic speaker or helping with the hobo auction.

What value does the LA Div/PSR/NMRA have for me? This is an on going question that all of us ask and there is no one answer. At this level, the grass roots level, one of the answers should be; "It brings friends that I have all over the division and further together so we have the opportunity to swap railroading." When I returned to the hobby in 2008 there were only two activities during the year. The annual meeting/banquet in the first quarter of the year and a public event to seek memberships that took place at South Coast Botanic Gardens in October were all that was left of what

ever other activities also took place. I'm sure there are many reasons why the number of activities has dwindle in the division. One of, what I'd call, a main stay of a division is layout tours has survived but is now separate from our division. Bob Chaparro does a great job, I for one, look forward to his tours. Several other organizations look to Bob to develop a layout tour for them.

SpringRail, for the fifth year, is the one new activity that has been added. Maybe it would be better to say returned under a new name. You recently received and email from me about the upcoming event. If you haven't attended in the past it's a one-day meet with most of the trimmings you would expect at an all day affair. It is on May 17th this year. Look for the flyer elsewhere in this Coupler for the details. Pretty hard to pass up the deal, there's a lot to see and do, and the price is cheap! The price just covers the cost of the food and drink you'd have to go out and get anyway rather than be able to stay and visit, share, learn, play, and admire. I've only heard positive statements and suggestions about and for the day for the past four years.

There are two changes to this years event: One, the required Bylaw's annual meeting has been held so that will not interrupt the days festivities. Two, John Allen's Time Saver puzzle is being added. There will be four puzzles, all the same track plan but setup differently, available to challenge your level of switching sophistication. A prize will be awarded for the fastest puzzle completion for each Time Saver.

Would like to see you there and get to know you as one of my railroad friends. I'm sure you will increase your circle of railroad friends, too. You never know, there could be someone that lives near you that enjoys the hobby you don't know and you would enjoy our hobby together. I've made several friends that I met at SpringRail.

Mike Allee
Los Angeles Division Superintendent

.....

X

OPR:

M.

FORM
21

DIRECTOR'S REPORT

FORM
21

Year 2014 is well underway, and as you read this issue of the Los Angeles Division "Coupler" you will note several changes.

Mike Allee was elected to replace Carl Heimberger as your Division Superintendent and James Keena was elected to replace Greg Francis as your Chief Clerk Paymaster. Scott Sackett replaced Andy Jackson as Coupler editor, (Andy retired), Lloyd Lehrer took over the Membership Aid position and Michael O'Brien took over the job as Achievement Chairman. I welcome all to their new positions.

Mark your calendar for Saturday, May 17th for SPRINGRAIL. Same location as last year for a great time, in Alhambra. We will have several Time Saver layouts for you to test out your skills, an early AM Swap meet, Clinics all day, and a great Lunch with HOBO Auction. See information enclosed.

As the Los Angeles Division is going to be the Host for the 2016 Regional Convention, we are talking with the PCR (Pacific Coast Region) on doing a joint Regional Convention. Convention Chairman, Carl Heimberger will attend the PCR

Convention in San Luis Obispo at the end of April to discuss this proposition at their Board Meeting.

As a side note, the downtown branch of the Los Angeles Public Library is having an exhibit on the 75th. Anniversary of the "Los Angeles Union Passenger Terminal" from May 4 through August 10. The exhibit will consist of items from the Getty Museum, showing the development, of the station, with early photographs and the original drawings and plans, and the future of transportation in Los Angeles. Many of the local modular Model Railroad clubs will be setting up, in the center of the exhibit and running their trains on the weekends. Several of your Division members are constructing a 4 ft. x 4 ft. model of the Station which will be on display as you enter the Exhibit. The Library is located at 630 W. Fifth St. at Grand Ave.

Robert "Bob" DeMoss
Los Angeles Division Director
.....



HELLO FROM THE WEBSITE GUY

Hi, my name is Tim Johnson and I am the Web Master for the Los Angeles Division website. In looking at ways to create more interest in the website I would like to add a photo gallery page. This would include photos of NMRA events (could be from other divisions as well as the Los Angeles Division) as well as interesting railroad photographs. In order to put together this page I need material and welcome contributions from the membership. If you have photos that you think would fit nicely on the photo gallery page please feel free to send them to me at:

airplanedad@yahoo.com

I will review them and post them on the website. So that visitors to the site will know what they are looking at I need the date, place and/or event and any other note of interest regarding the photo(s) for use in a caption. I will also give credit to the photographer.

<http://www.ladiv-nmra.org/>

I look forward to setting up this page with your great photos !!!!!

Tim Johnson
Los Angeles Division Webmaster
.....

FINANCIAL REPORT

The Los Angeles Division is an unincorporated non-profit organization. Our membership is a subset of NMRA members, but the assets we control do not belong to the NMRA and our financial activity is separate from theirs.

In 2013 Los Angeles Division purchased model railroad items for resale and sold a portion of them. Management's decision not to account for inventory prevents determination of total assets or net income, so this report is formatted to reflect our 2013 cash receipts and disbursements, as well as our beginning and ending balances.

Los Angeles Division
Cash Receipts and Disbursements
Year ending December 31, 2013

Receipts

SpringRail Revenue	\$	1,138.30
Sales from Model RR Item Inventory		324.00
Donation		5.00
Interest		0.36
Total Receipts	\$	1,467.66

Disbursements

Oxnard 2012 Convention Costs Paid in 2013	\$	1,172.34
SpringRail Costs		1,282.62
Fall Train Show Costs		25.00
Hospitality Costs-Other Events		193.85
Vinyl LA Division Banner		270.55
DPL Projector and Laptop		536.28
Staff Shirts		338.29
Purchases of Model RR Items for Resale		1,075.00
Reimbursable Costs Advanced for NMRA		1,200.87 *
Website		44.00
Printing Supplies		80.90
Other		11.00
Total Disbursements		6,230.70

(Excess of Disbursements) over Receipts \$ (4,763.04)

Cash Balance January 1, 2013 \$ 17,568.78

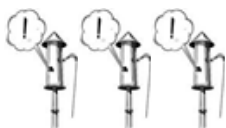
Cash Balance December 31, 2013 \$ 12,805.74
Checking \$7,705.01+Savings \$5,100.73

*Received payment in full in January 2014

Respectfully submitted,

Gregory A. Francis
Chief Clerk/Paymaster March 24, 2012 to February 22, 2014

.....



STATION STOP

Form
87

TO CONDUCTOR AND ENGINEER

of _____ at _____
of _____ at _____

Since the last report, many railroading events have been occurring. Probably the most memorable one is the loss of the "Big Boy" #4014 from display at Fairplex. I'm sure it has tough for many of the members of the historical society to see it go. The one great thing is that in the future many of us are going to buy a ticket and have a chance to take a ride on it at the head end. If not riding, then driving along side breaking traffic laws chasing 4014 to get that great video or a picture.

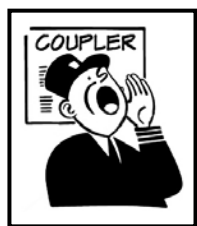
I did take the time to attend the Cajon Division's Temecula annual weekend, the clinics where very good, as always. Brought home a weather beaten gondola from James Keena's clinic. He's going to repeat the clinic at SpringRail. Spent quite a bit of time with Gary Butts as he constructed a John Allen Time Saver with the help of those participating in the clinics and it was being operated at the dinner that evening. He is a fine modeler. Attending one of his clinics is worth the time. I now know how to use a resistance solder system because of attending one of his clinics and I'm fairly good, if I do say so myself.

Events are coming up. First is the PCR convention Coast Rail in San Luis Obispo, April 30th to May 4th. I know several of members of the PSR are attending the event. If your not going maybe you should reconsider. A chance to see different clinics and layout we don't often have the opportunity to attend or visit. The next is on May 17th our own LA Div. SpringRail. A new wrinkle is being added this year John Allen's Time Saver game. I'm excited about watching the competition. Who will win the bragging rights? Not to mention a prize. The national convention in Cleveland July 13th thru the 19th isn't very far away. Then September 3rd - 7th is the PSR convention Uniting Model Railroaders is being held in San Diego. Plan on attending at least one if not two events.

Hope to see you at SpringRail

Mike Allee

.....



LETTER FROM THE EDITOR

As the newly minted editor of the Los Angeles "Coupler" newsletter, my name is Scott Sackett and I'd like to introduce myself.

I would also like to take this moment and thank the previous editor, Andy Jackson, for all his dedication and hard work. If anybody has ever attempted put together a newsletter and maintain it, you can imagine it is sometimes quite the endeavour issue after issue.

So as you can see - we are trying out a new look for the "Coupler". One that I hope can grow over time. But we really need the help and support of all the NMRA members to succeed. If you have any articles, photos, hints, tips,

that you like to share with the "Coupler", then I eagerly awaiting them at essaness@pacbell.net. Please add "NMRA Coupler" to the subject line so my fickle Spam filter doesn't bury it in the trash folder.

My goal is to fill these pages with all sorts of useful, interesting, and engaging articles. The more participation we get from you - on all fronts, not just the newsletter, will only help to make our organization stronger.

I look forward to many more issues with you!

Scott Sackett

Los Angeles Division Coupler Editor

.....

NOTES FROM THE PASSENGER CAR...

THE MEMBERSHIP REPORT

FORM
45

Greetings fellow members!

Spring is in the air, and that can mean only one thing. SpringRail 2014 is on the way! More about the exciting details of this event in a moment, but first...

The Los Angeles Division annual business meeting was held February 22nd at the Coco's restaurant in Arcadia. At the meeting your newly elected Superintendent Mike Allee and Chief Clerk/ Paymaster James Keena assumed their new positions. Carl Heimberger, outgoing Superintendent, spoke to the group and welcomed Mike to his new post. Mike also spoke, addressing the direction the Division might take under his leadership, including more events throughout the year for the membership. We will keep you informed about this as it develops. Greg Francis, outgoing Chief Clerk/Paymaster, reported on the financial status of the Division and handed over the books to James Keena. Thanks for your service, Carl and Greg. We would also like to thank all the members who attended the meeting, and remind the entire membership that the annual business meeting and all advisory board meetings are open to all L.A. Division members.

Next up was the Santa Susana Depot Swap meet on March 22nd. We try to get out to the swap meet to visit with some of our Ventura County members as often as we can. This time, in addition to visiting with our members and trying to gain some new ones, we were also spreading the word about the upcoming SpringRail 2014 event.

We always receive a warm welcome at the swap meet. If you have a chance, go and check it out. If we are there, come by and say hi! Thanks to Dave Putnam and the Santa Susana Pacific gang for their hospitality. (See the events page in this issue for upcoming dates).

The next stop was the Cajon Division meet in Temecula, March 28th-29th. This is also a PSR Board meeting, so it is our chance to see friends from all the divisions, even Arizona!

There is a full schedule of clinics at Temecula, and some of our L.A. Division team were involved, either presenting or attending. James Keena presented his gondola weathering clinic in which he demonstrates how, with a

little weathering powder and a soldering iron, you can turn a "fresh out of the box" car in to one that looks like it has been on the road for years. Mike Allee turned out a well-weathered example. Meanwhile, Mona Raymer and Carl Heimberger pitched in with the rest of the group building a Time Saver layout in a clinic presented by Gary Butts. Gary came up with a method in which the majority of the trackwork can be completed in 3 hours! The wiring took a little more time, but by banquet time that evening the layout was ready to run!

Well, we promised we would give you some exciting details about SpringRail 2014, and this description of building Gary's Time Saver layout is a perfect example. At SpringRail 2014 we are introducing the Time Saver Challenge! For those of you that are not familiar with the Time Saver, it was originally conceived by model railroading legend John Allen as a switching puzzle. You have to complete the specified switching maneuvers competing against the clock. The fastest time wins! We will have at least 3 (we think Gary's Time Saver layout will be there) Time Saver layouts on which SpringRail attendees will be able to compete. The fastest times will receive prizes! Look for more details about SpringRail 2014 in this issue of The Coupler.

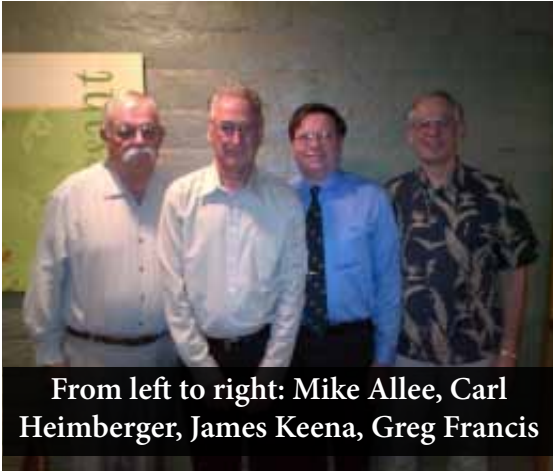
So, that's what we have been doing-why don't you tell us what you have been doing? If you are a member of L.A.Division and you have some photos of an interesting train activity, either model or prototype, send them to us with a brief description of what's happening and we may share them in the Coupler!

On behalf of the L.A.Division we would like to welcome our new members: Bob MacKenzie, Eric Cook, Kurt Alexander, Kevin Stuckhoff, Jon Cook, Matthew Benedict, and Paul Yanutik (as indicated on the new member rosters Nov. 2013-Mar. 2014). If you have recently joined have no fear! You will be welcomed in the next issue of The Coupler.

Pat and Mona Raymer
Membership co-chairs
Membership@ladiv-nmra.org

.....

THE LOS ANGELES DIVISION ANNUAL BUSINESS MEETING



From left to right: Mike Allee, Carl Heimberger, James Keena, Greg Francis



Carl Heimberger addresses the L.A. Division business meeting



Carl Heimberger hands over the throttle to Mike Allee



Greg Francis gives his final report as Chief Clerk/Paymaster

SANTA SUSANA DEPOT SWAP MEET



Los Angeles Division table at Santa Susana Swapmeet

CAJON DIVISION MEET IN TEMECULA



James Keena demonstrates
gondola weathering in his clinic



Mike Allee shows his
weathering talent



Clinic attendees learning
James' weathering technique



Mona Raymer lays down roadbed in Gary
Butt's Time Saver construction clinic



MARK THE CALENDAR.. SPRINGRAIL WANTS YOU!!!

The Los Angeles Division of the NMRA will be holding the 5th annual SPRINGRAIL Meet on May 17, 2014, in Alhambra at the First Christian Church, 220 S. 5th St. We are looking for some new and exciting clinics for this event. If you have a skill or modeling technique you would like to share with others, please consider do a clinic at this year's SpringRail Meet.

Your presentation should be about 45 minutes long, and it is always great to have handout.

Did you know giving a clinic counts toward your

MMR for Volunteer and/or Author achievement certificates. If you are interested in giving a clinic please contact Carl Heimberger at cjheimberger@gmail.com. Please provide the clinic title and brief description of your clinic if you are interested, and please provide me with your information ASAP.

Carl Heimberger

2014 SpringRail Clinic Manager

.....

CONFIRMED SPRINGRAIL 2014 CLINICS

Tim Johnson - Multi color Diesel Locomotive Painting.

I will cover basic airbrush set up, prepping and priming, how to handle the lighter colors (yellows, reds and oranges), applying the first color, masking, applying additional colors and finally lettering and applying the finish coat.

James Keena - Hands on Weathering Cars

Make and take hands on demonstration of weathering techniques. Each participant will receive a freight car to learn hands-on several different methods of weathering themselves. This includes brush painting, alcohol washes, dry brushing and the use of dry and wet applications of weathering powders. The weathering supplies will be provided. The degree of weathering from light fairly new, medium just dusty dirty, rusty well used or beat-up ready to be scraped is up to each participant.

Lloyd - Lehrer - "Grass, green stuff, ground cover by electricity, velocity and gravity"

Spice your layout by learning techniques using ground foam, static grass and other grass covering and brush.

Robert Mitchell - Backdrop Painting

Todd Scott - DCC Installation and Programming

Gary Butts - Wiring your layout.

Basic layout track wiring includes fundamental descriptions of the common DC and DCC model railroad electrical control characteristics followed by detailed descriptions of the problems associated with, and solutions to, the most common layout track wiring situations including turnouts, crossings, reverse loops, reversing Y's, long track runs, and electrical buss considerations.

More clinics in the works.

If you are planning to attend, and want to ensure we have enough lunches available - Please RSVP to Bob DeMoss @

director@ladiv-nmra.org



FROM THE PAST

Some modelers work very carefully when painting their models, while others pay good money to have their equipment painted. But over time the paint wears off on places that get rubbed when carried in a box or from handling. Here's a tip that you may not know about from the past followed by painting a brass locomotive.

.....

IF YOUR PAINT RUBS OFF

Frank Lehman

A good paint job, especially Flo-quil, soon wears off from handling. You will notice the corners of the cab, the cylinder chests and running boards showing wear. To prevent this overspray the finished job with Weber's Mat-var #53, made by F. Weber, Phila, PA. Makes it so tough you can hardly scratch it off with a knife.

PAINT YOUR BRASS LOCOMOTIVE

Tom O'Neil

There you are looking at a beautiful landscape and detailed trackwork with a train of loaded hoppers approaching. Nice sight? It should be, except that all too often the locomotive pulling is unnatural gold. Unpainted because in many cases the owner has been scared of tackling it because of complicated and often detailed articles on the subject.

For the veteran read not more; this is for those of us who felt or still feel that the talent wasn't in us. However it's really more a matter of patience than talent that is needed.

The first step is dis-assembling the loco, which is often just a matter of a few screws. Then get the right paint. Flo-quil offers a wide variety and their Polly brand of water base paints is excellent for diesels. For steamers grimy black, not engine black is a good bet since it gives a slightly weathered look.

Like most metals, brass is porous so it will absorb oil and grease, especially from fingers. Paint won't adhere to oily surfaces so be certain all oil and dirt is removed with any number of preparations available in hobby shops. Once you get this done, grab a pair of rubber dish washing gloves and you can forget the oil problem.

For a top job, spray on a primer coat, take care not to put on so much that details are hidden.--
-A thin coat will hold your finish with no trouble at all. If you want to try your hand at brushing, be sure to use a slow drying paint which once again your hobby shop can provide.

Then if you don't like your work on some part of the model you can immediately wash it off with a thinner before the paint hardens. Though it may seem so, hand painting isn't very easy. (many a pro even has a rough time here.)

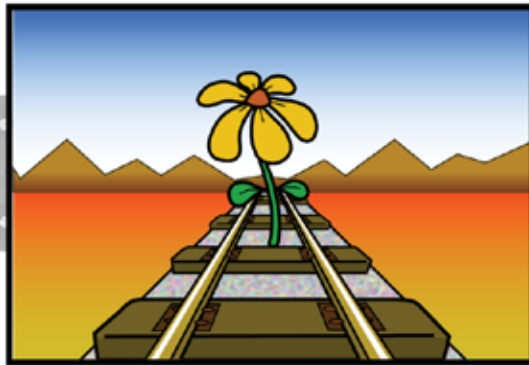
For a beginner spray painting is best; it does take reasonable care and isn't meant to be a rush job. If you have a goodly number of locos, an air brush is a good buy. If you only have a few, a spray can will do as well, if you carefully follow the directions on the can. In both cases it's best to practice on something first.

Once the model is done you can bake it dry in an oven (get some expert advice doing this) or use the time honored method of letting it sit for a few days.

Now that you've got this under your belt you may want to weather it. Now this can get complicated or anyone, which is why grimy black is a good paint to use. However a mixture of talcum powder or powdered charcoal can be applied with a brush and taken off to suit your tastes.

Don't be afraid to paint – even a thumbs like myself who takes his time can do a good job!!

SPRINGRAIL 2014



Swap Meet • Clinics • Lunch • Hobo Auction

***Saturday
May 17th, 2014***

**Swap Meet 7:00am - 10:00am
Clinics from 8:00am until 4:00pm**

FREE COFFEE & DONUTS AVAILABLE IN THE MORNING

BRING A MODEL OR TWO TO SHOW.

PRIZES DETERMINED BY POPULAR VOTE
IF DESIRED, JUDGED BY **NMRA STANDARDS** AS WELL!
TIME SAVER "CHALLENGE", HOBO AUCTION, AND LUNCH INCLUDED!



FIRST CHRISTIAN CHURCH
220 S. 5th ST. ALHAMBRA 91801
Alhambra, CA 91801
CORNER OF 5th AND COMMONWEALTH



SpringRail Meet & Swap Meet

**Clinics for the Beginner
to
Advanced Railroad Modelers!**

Time - Saver Challenges!!!!

Bill of Fare

NMRA Members - Swap Meet, Clinics, Day events, Lunch
and 25 Hobo Auction Tickets

\$10.00

Non-NMRA Members - Swap Meet, Clinics, Day events, Lunch
and 25 Hobo Auction Tickets

\$20.00

Swap Meet Entrance Only

\$5.00



To Ensure Lunches for All - Please RSVP to:



(Box Lunch - choice of Turkey, Roast Beef and Ham sandwiches
with soft Drink or water.)

bobrds.sfscrr@verizon.net

Plus - Children 12 and under Free!!!

SWAP MEET VENDORS:

Setup 6:30am

Seller Pre-Registration \$10 / 8' Space - your table

Day of Registration \$15 / 8' Space your table

Rent 8' Table & Chair \$12 - By Advanced Registration

If you pay for SpringRail - Swap Meet Registration fee waved

CASH ONLY PLEASE

Sellers Contact and **RSVP** Lloyd Lehrer at
lloydlehrer@gmail.com or 310 951-9097 (9am-9pm)
please include "**springrail swap**" in your email title.

Visit the LA Division Website:

<http://www.ladiv-nmra.org/>

2014 LOS ANGELES DIVISION DIRECTORY

Division Superintendent - Mike Allee

1606 S. Fifth Avenue Arcadia, CA 91006
(626) 446-3949 rmallee@me.com

Division Director - Robert DeMoss

3706 Woodruff Ave Long Beach, CA 90808
(562) 421-2199 bobrds.sfscrr@verizon.net

Convention Chairman - Carl Heimberger

41324 North 30th St. West Palmdale, CA 93551
Cell: (714) 745-8690 cjheimberger@gmail.com

Chief Clerk/Paymaster - James Kenna

12341 Heritage Springs Drive
Santa Fe Springs, CA 90670
Cell: (562) 325-3846 pjkeenawhittier@msn.com

Membership Co-Chairs - Pat & Mona Raymer

2655 El Caminito La Crescenta, CA 91214
(818) 957-7351 membership@ladiv-nmra.org

Member Aid Chairman - Lloyd Lehrer

401 9th St. Manhattan Beach, CA 90266
(310) 951-9097 lloydlehrer@gmail.com

L.A. Coupler Editor - Scott Sackett

1264 Alameda Ave. Glendale CA. 91201
(818) 846-1735 essaness@pacbell.net

L. A. Division Webmaster - Tim Johnson

10859-1/2 Kling St. North Hollywood CA 91602
(818) 634-8389 airplanedad@yahoo.com

Achievement Chair - Michael O'Brien

1070 N. Marengo Ave. Pasadena CA. 91103
(626) 798-7087 mikeobrien@corbu.us

Flagstop - Lindsay Smith

909-599-0182 wlindsays31@verizon.net

please also refer to: PSR Dispatch 1446 Paseo Gracia San Dimas, CA 91773-3915

Raillette Chair & Business/Circulation Manager positions are VACANT



NATIONAL MODEL RAILROAD ASSOCIATION, INC.®

4121 Cromwell Road
Chattanooga, TN 37421

Phone: (423) 892-2846
Email: nmrahq@aol.com

Fax: (423) 899-4869
Website: www.nmra.org

RENEWAL NOTICE

Name & ID:					
Address:					
City:		State:		Zip:	
Phone:		Birth Date:		Scale:	
Email:		Occupation:			

NMRA Membership Type Circle the option of your Choice	1 Year	Total
Member with NMRA Magazine Subscription ~ All Rights and Benefits; includes NMRA Magazine	\$ 66.00	
Member without NMRA Magazine Subscription ~ All Rights and Benefits; <u>does not include</u> NMRA Magazine	\$ 44.00	
Family ~ Spouse or minor child of above member in good standing; Does not include NMRA Magazine or voting rights. <u>Provide</u> member's name below. Name: _____ DOB: _____	\$ 9.00	
Student ~ Anyone under 18 years or student between 19-25 years of age All rights and benefits and includes NMRA Magazine.	\$ 32.00	
Sustaining ~ Mandatory for group memberships (Clubs, Associations, Businesses) All Rights and Benefits and includes NMRA Magazine.	\$110.00	

Region Subscription Options For Member Circle the option of your Choice					
Subscription Type	1 Yr	Total	Subscription Type	1 Yr	Total
21 ~ Northeastern Subscription	\$ 7.00		30 ~ Mid Eastern Subscription	\$ 9.00	
23 ~ North Central Subscription	\$10.00		33 ~ South Eastern Subscription	\$10.00	
24 ~Thousand Lakes Subscription	\$10.00		36 ~ Sunshine Subscription	\$10.00	
25 ~ Pacific Northwest Subscription	\$ 0.00		37 ~ Pacific South West Subscription	\$12.00	
26 ~ Pacific Coast Subscription	\$ 8.00		* ~ Out of regions subscriptions may be charged additional fees by Region		
28 ~ Midwest Subscription	\$ 6.00				

Phone: _____ _____ E mail: _____ _____

PAYMENT	NMRA Membership Total:	\$
	Regions Subscription Total:	\$
	Merchandise Order Total:	\$
	PLEASE INCLUDE SHIPPING	\$
	Donation Amount:	\$
	Grand Total:	\$

Go to the NMRA website at www.nmra.org and visit the online store for the latest merchandise updates
We also accept MasterCard, Visa, American Express and Discover

Credit Card No.	<input type="text"/>	<input type="text"/>	<input type="text"/>	<input type="text"/>	<input type="text"/>	<input type="text"/>	<input type="text"/>	<input type="text"/>	<input type="text"/>	Verification Code	<input type="text"/>	<input type="text"/>	<input type="text"/>	<input type="text"/>
Expiration Date:	<div>Month</div>		<div>Year</div>		Signature _____									



THE RAILETTES NEED YOU!!!

Attention Ladies!

The Railettes are in need of volunteers to help with their activities. If you are interested in meeting a great circle of women and be part of creating some worthwhile events, then please contact the Superintendent.
The more participants we have - the better the fun!



Los Angeles Divison NMRA
Next Board Meeting
Thursday, May 8th 7:00 PM
GMRRRC
619 Hahn Ave. Glendale CA. 91203

2014 MODEL TRAIN & RAILROAD EVENTS

May

4th - August 10th The Downtown branch of the Los Angeles Public Library is having an exhibit on the 75th. Anniversary of the Los Angeles Union Passenger Terminal

17th SpringRail will start out at 7:00 am with a Swap Meet, followed with educational clinics starting at 8:00 am. The lunch break will also include the Hobo Auction with over 100 items, followed by more clinics. The event should end around 4:30 pm. There will a contest table where you can enter a model of your choosing.

Prizes will be awarded on popular vote.

******We need volunteers for this event on so please help out any way you can******

31st Santa Susana Depot Swap meet, Simi Valley, CA 7:00 – 10:00 am

31st - June 1. The Big Train Show, Ontario Convention Center

July

13th to 19th NMRA National Convention Cleveland OH www.2014cleveland.org

22nd to 27nd Santa Fe Historical & Modeling Society Fresno

August

23rd Santa Susana Depot Swap meet, Simi Valley, CA 7:00 – 10:00 am

September

3rd to 7th PSR/NMRA Regional Convention San Diego

October

25th Santa Susana Depot Swap meet, Simi Valley, CA 7:00 – 10:00 am

25th & 26th "Fright Freight" South Coast Botanic Gardens