



LA Coupler

The Newsletter of the Los Angeles Division of the NMRA

© Drew Jacksich



Page 5

In This Issue

Call for Candidates

2023 Grand Canyon Special

...and more!

Los Angeles Division
Pacific Southwest Region
National Model Railroad Association, Inc.
www.ladiv-nmra.org





Features

- Superintendent's Report..... 4
-  2023 Grand Canyon Special..... 5
- How To....Simple Staging..... 8
- Call for Candidates..... 10
- Model Railroad Festival..... 11
- Around the Division..... 13
- Financial Report..... 16
- Advisory Board Contact List..... 17
- Schedule of Events..... 18



Grand Canyon Railroad Engine 4960 heading for the Grand Canyon.



On the Cover...

The PSR Convention is coming to Arizona in June.

See page 5

LA Coupler Deadlines

Publication Team

The LA Coupler is always looking for submissions, articles, photos, or ideas. Please reach out to the Editor for more information:

Lisican@gmail.com

Submission Deadlines

Spring Issue: February 1

Summer Issue: May 1

Fall Issue: August 1

Winter Issue: November 1

Editor:

Nick Lisica

2709 E 2nd St

Long Beach, CA 90803

Lisican@gmail.com

Issue Photographers:

Nick Lisica

Electronic PDF Distribution:

Kevin Spady

Publication Information for the LA Coupler

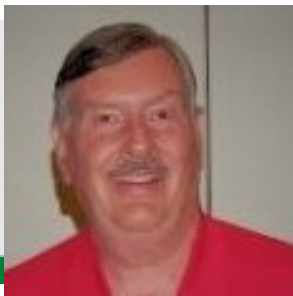
The official publication of the Los Angeles Division, Pacific Southwest Region (PSR), National Model Railroad Association (NMRA). The LA Coupler is published quarterly by the Los Angeles Division of the National Model Railroad Association and is available online at: www.ladiv-nmra.org

All materials, articles, and advertising must be submitted to the Editor and in an electronic format. Contact us for a copy of our submission guidelines. Advertisers may contact the Editor to request guidelines and a rate card. Subscribers with an e-mail address on file will receive the PDF version. Copyright 2022, LA Division Pacific Southwest Region, National Model Railroad Association.

Permission to reprint granted to all affiliates of the NMRA. Others may request permission to reprint from the Editor.

Except for Official Reports, opinions expressed are those of the author, and do not necessarily represent those of the LA Division, PSR, or the NMRA.

Thank you for supporting the LA Division!



Superintendent's Report

- Vic Cavalli

A New Year...New Beginnings

Welcome 2023! Hope it has been good to you thus far.

With the start of each new calendar year, I look forward to the opportunity of starting fresh with a “clean” slate; leaving behind what occurred previously, instead thinking about what might possibly be ahead. Let’s sneak a peek...

Normally, the Division starts each new calendar year with its Annual Membership Meeting and Banquet. This is usually held in mid-to-late February. It’s a chance to visit with friends, have a meal together, and (on even-numbered years) install new officers onto the Division’s Advisory Board (Board). This year, however – due to a suggestion made during the “open floor” segment of December’s Board meeting – a comment to hold a picnic, instead of a banquet, was offered, discussed, and accepted. So, instead of a February banquet, expect an invite to an April-ish family picnic!

Prior to then, I hope many of you were able to attend the Great Train Show held at the Ventura County Fairgrounds, February 18th and 19th. Members from the Division – thank you John McGreevy, and Pat and Mona Raymer – were there manning our very successful NMRA Recruitment table. Were you one of those who stopped by and said “Hi”?

Planning/scheduling for our first two (2) of this year’s Division sponsored home/club layout tours is now well underway. While the Board is still finalizing details for an April open house, June 24, 2023 has been selected for when Chuck Fisher’s home layout will be made available to only NMRA members/family for viewing. [Details associated with each event will be outlined in forthcoming MailChimp announcements.]

Then, don’t forget, the Pacific Southwest Region’s annual convention, Grand Canyon Special 2023, will be held in Flagstaff, AZ, June 7th – 10th this year. An extra special bonus this year will be the ability to ride behind live steam on the Grand Canyon Railroad, Saturday, June 10th. See website: www.psrconvention.org for additional information.

And that only gets us to the halfway point of 2023! Hope you agree, 2023 appears to be starting off marvelously.

As always, I welcome your thoughts or comments.

Until the next LA Coupler comes out, happy model railroading to you,

Vic Cavalli

Superintendent, Los Angeles Division, PSR, NMRA

The Grand Canyon Special 2023

- Jess Poole



Photo by Drew Jacksich, American-Rails.com

Are you looking for a unique summer get-away? The cool pines of Northern Arizona are calling! The Arizona Division of the Pacific Southwest Region of the NMRA is presenting the Grand Canyon Special 2023, and this is one convention you do not want to miss. Flagstaff offers a small college town feeling with over 100 BNSF trains roaring through town every day! There are many nearby attractions, some within walking distance. The convention will be a new and completely different format featuring two days of clinics and events culminating with a steam train (no diesel) to the Grand Canyon.

The venue for this year's convention is the fabulous Drury Hotel and High Country Convention Center. The clean spacious rooms come with complimentary Hot Breakfast and an evening "Manager's Kick-Back" that includes three free drinks and a hot buffet for dinner. Everything is connected from your room to clinic rooms to the banquet hall and covered parking garage.

The Grand Canyon Special 2023

- Jess Poole



The Drury Hotel on the Campus of Northern Arizona University in Flagstaff Arizona.

The condensed two-day format begins with an Ice Cream Social on Wednesday Night. Thursday is Hobo Day beginning with the Hobo Breakfast and ending with the always fun (and funny) Hobo Auction. In between are clinics and events for everyone to enjoy. There will be plenty of modeling clinics, but there will also be a series dedicated to local events that focus on the Flagstaff area and the Grand Canyon. There is also an available wine tasting in the afternoon. Friday is Train Day beginning with an engine house tour of the Grand Canyon Railroad facility in nearby Williams, AZ. More clinics, more activities, a swap meet and finally rail-fanning at the Amtrak depot in the evening while waiting for the Southwest Chief to (hopefully) arrive at 8:32PM.

Saturday is the day we have all been waiting for. Mikado 4960 will pull our NMRA exclusive train to the Grand Canyon. Along the way we will experience the high desert and finally the pinon pines as we approach the Canyon. The train depot is in the Grand Canyon Village at the foot of the world famous El Tovar Hotel. Just past the hotel is the rim and spectacular views into the Grand Canyon. There will be plenty of time for making memories and taking photos. Then it is back to Williams with a stop along the way for a photo run-by. The evening closes with a banquet and highlighted by our guest speaker, Dale Angell, the Toy Man!

You can customize your Arizona experience by attending just the convention, or just the train ride. Or better yet, have your family and friends join you. You can also attend the convention and have family join for just the train ride. So many choices, such a great time. Sign up before March 31 and get the Early Bird Special pricing. For more details or to register visit our website at:

azdiv-nmra.org/psr2023convention





NMRA / Pacific Southwest Regional Convention
Arizona Division / Flagstaff, Arizona June 7 – 11, 2023



**Hobo Jo Sez:
Hurry!!**



Don't Miss this opportunity to ride a Steam train to the Grand Canyon on Saturday 10, departing at 8:30 AM !!

- *Exclusive for NMRA Members*
 - *(You can join for only \$20 and then bring guests)*
- *Engine House Tour Friday Morning*
- *Photo Run-by on return trip from Canyon*

Train Tickets are selling fast.....

Luxury Car Seats – Sold Out

First Class—Only a few left—Hurry!!

Coach and Pullman Class —Seats still available

The Convention Schedule is Completely Unique



Two days of Meetings and Clinics:

- **Local Clinics-** focusing on Flagstaff, Williams and the Grand Canyon
- **Modeling Clinics** focusing on the latest trends in model railroading

Other Events include:

- ❖ **Welcome Night with an Ice Cream Social**
- ❖ **Hobo day featuring a Hobo Breakfast and a Hobo Auction**
- ❖ **Railfanning at the Historic Flagstaff Depot**
- ❖ **Grand Canyon Railroad Engine House Tour**
- ❖ **Local Interest Tours in Flagstaff**
- ❖ **Saturday is dedicated to the Grand Canyon and Banquet**
- ❖ **Awards Banquet with Guest Speaker Dale Angell—The Toy Man**

Early Bird Pricing ends March 31

Visit our Website for additional details and to Register:
azdiv-nmra.org/psr2023convention

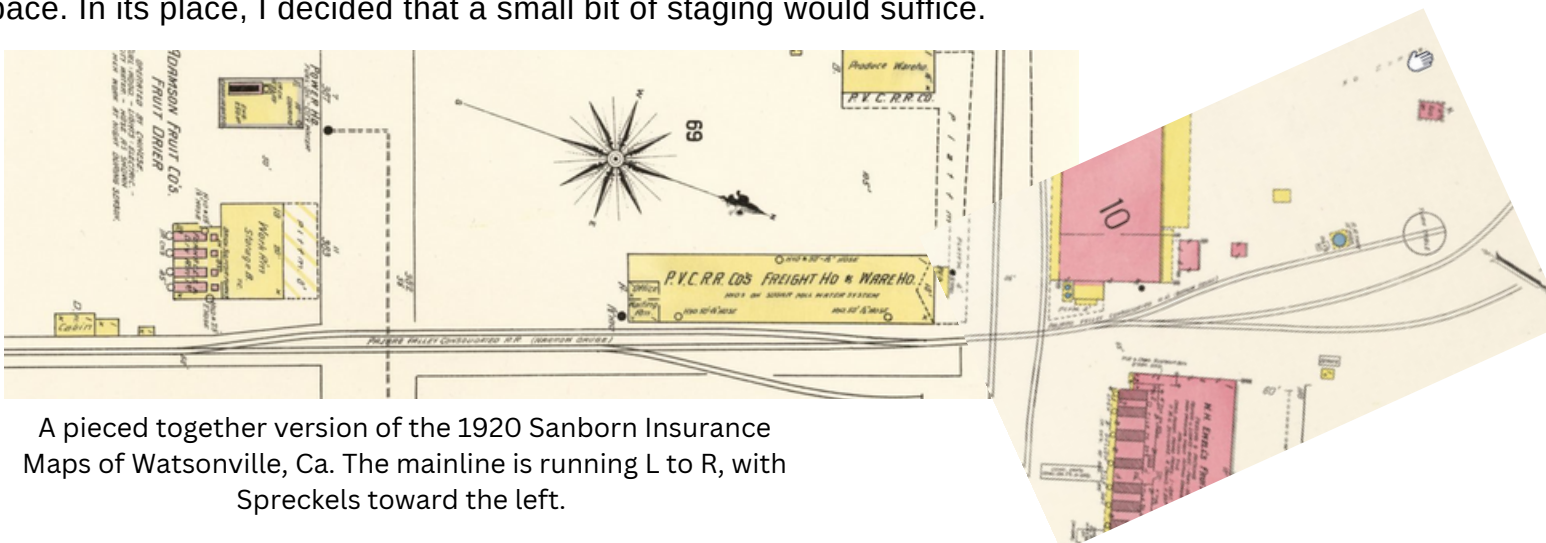


A Little Work, A Big Result

- Nick Lisica

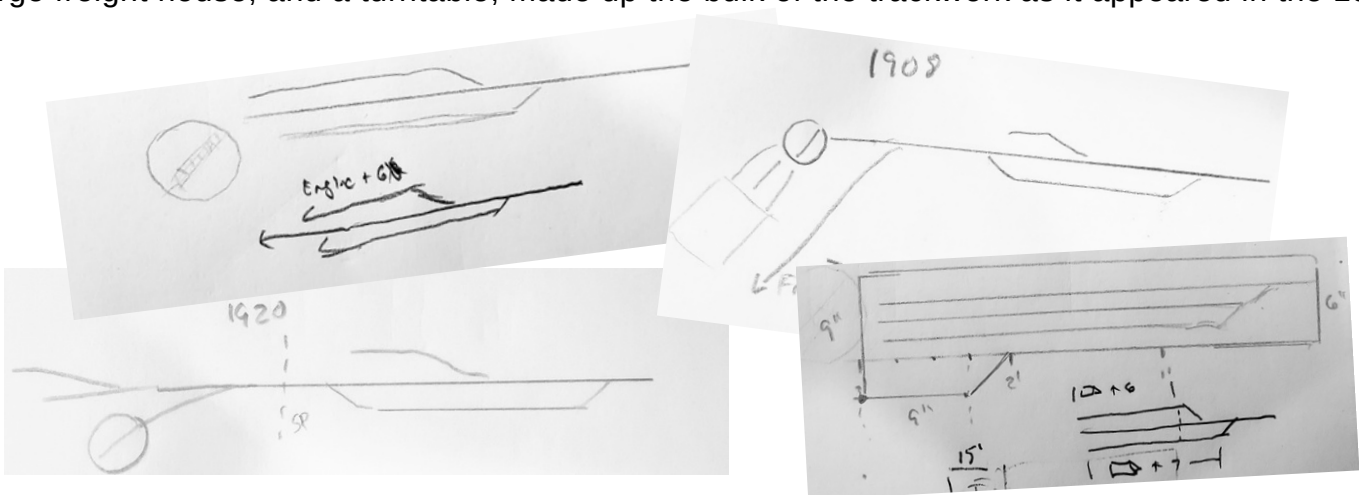
As I've written before, my layout represents a small narrow-gauge line serving a large sugar beet refinery in the Salinas Valley during the 1920s. The prototype ran from Watsonville, Ca, south to the refinery in Spreckels, with numerous sidings along the way for loading sugar beets. The northern end of the line, Watsonville, was home to the original sugar beet factory and engine servicing facilities. By the 1920s, the sugar factory and engine house were gone. There was still a large freight house, used by both the Southern Pacific and the Pajaro Valley Consolidated RR (my prototype), as well as a turntable.

As modeled in my basement, the railroad runs from the Spreckels Refinery north to Moss Landing. I had wanted to model the freight house and engine services in Watsonville, however, I ran out of space. In its place, I decided that a small bit of staging would suffice.



A pieced together version of the 1920 Sanborn Insurance Maps of Watsonville, Ca. The mainline is running L to R, with Spreckels toward the left.

The prototype track arrangement was simple enough to duplicate, a mainline, a passing siding with a large freight house, and a turntable, made up the bulk of the trackwork as it appeared in the 1920s.



In planning my staging yard, I struggled to break away from the prototype layout (it worked then, it'd work now). Over the years, my designs ate up far too much space, always resulted in me wanting to add the structures and details to create a complete scene, and fluctuated from what actually existed in the 1920s (a turntable, no engine storage), and what would provide me with more operational tools (examples: engine storage tracks, a SP crossing). The only constant was that I never moved forward with the actual construction.

Little Work, Big Results

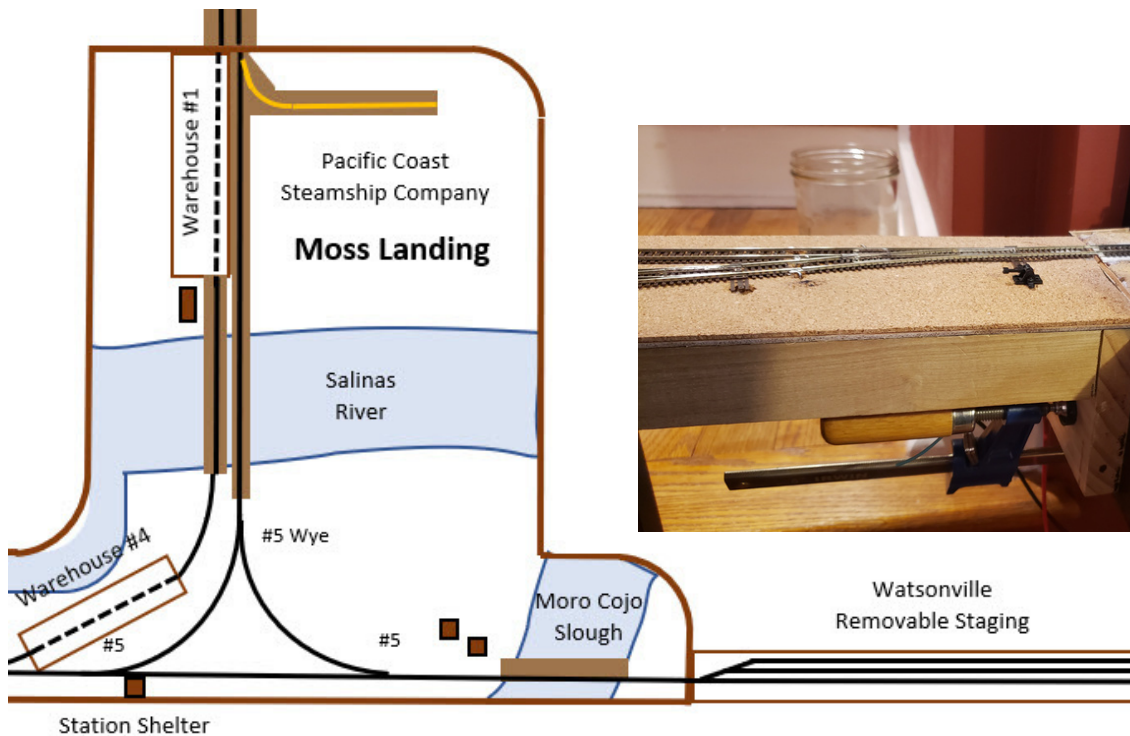
- Continued

I finally decided that having something up was better than nothing, so I built a small layout extension (6" x 36"), and began placing track and turnout templates on it to see what would fit. In the end, I settled on three simple yard tracks. It isn't prototypical, however it works, and I can always change it in the future. The biggest sacrifice was the turntable. For one, I couldn't find one I liked that fit my space, and more importantly, I accepted that I could just as easily use the wye at Moss Landing to turn trains and engines.



Until now, the layout ended at Moro Cojo Slough, which in reality, is much closer to the wye than the drawing below shows. This meant that there was only room for an engine and one car to turnaround. Now, not only can I store equipment for future operations, I can easily turn trains for their return trips to Spreckels on the other end of the layout.

Construction was simple, and the wiring was straight forward. I still need to finalize how I'll connect the staging yard to the layout, for now a clamp is in use. Otherwise, it's complete and doing exactly what I'd hoped.





Call for Candidates



The Pacific Southwest Region (PSR) of the National Model Railroad Association (NMRA) has the following office coming open for election:

Los Angeles Division Director

Any member in good standing with the NMRA (or who is applying for such membership) and living within the boundaries of the Division (i.e., Los Angeles or Ventura counties) may run for this office. The elected candidate will assume office for a period of two (2) years, starting on September 16, 2023.

Duties and responsibilities of the office:

A **Division's Director** is the individual responsible through whom all National and Regional information and programs are funneled through. A Director's duty includes attending all meetings of the PSR Board, reporting on the status of their Division, and presenting all questions or initiative action from their home territory. As a member of the Board, he/she is an officer of the Region and in all deliberations and voting is acting not only on the behalf of their Division's members but primarily in support of the objectives of the Region as a whole.

It is strongly recommended all individuals thoroughly review both the PSR's By-Laws and Manual of Operations, fully understand their contents, prior to submitting their name for candidacy. Copies of both documents are available for viewing and/or downloading on the PSR's website: www.psrnmra.org/index.php/library/governance

Submission of candidacy needs to be delivered to the PSR Nominations and Elections Chair, e-mail address: VicCavalli@comcast.net, no later than **April 16, 2023**.

Model Railroad Festival

April 15 - 16 | 10:00am - 4:00pm

**FOUR SEASONS HEMET COMMUNITY LODGE
HEMET, CALIFORNIA**

\$5 (Good for both Saturday and Sunday)

DISPLAYS

California South Coast On30 Modular
Orange County HO Module Railroaders
ZoCAL Z Scale Modular
Ntrak Express Modular including SODOR Thomas the Train

MINI LAYOUTS

On30 - "Cinnamon Mining Company" - Scott Carter
On30 - "Arizona Dreamin" - Justin Rasas
On30 - "Typhoon Lagoon" - Bob Kurner
TTOS - "SF Division" - Toy Train Operating Society
HO - "20s and 30s Modular" - David Toschak
On30 - "Puerta Margarita" - Gary Beatty

ON THE PATIO

Velocipede from the Southern California Railroad Museum
Two Live Steam Locomotives from Riverside and Chula Vista
Self-Propelled Kids' Train
Mini Street-Rod Show "5 Cool Street Rods"
Food Concessions - Breakfast - Lunch - Dinner - Snacks
Beer & Wine Bar

SATURDAY CLINICS

10:00am "Southern Pacific Narrow Gauge" - Steve Bradley
12:00pm "Installing 'Dead Rail' in Small Locos" - Justin Rasas
2:00pm "Scenery Techniques" - Kevin Spady

SUNDAY CLINICS

Various movies about modeling and prototype railroads

Model Railroad Festival

Saturday Clinics

10:00am "Southern Pacific Narrow Gauge" - Steve Bradley
12:00pm "Installing 'Dead Rail' in Small Locos" - Justin Rasas
2:00pm "Scenery Techniques" - Kevin Spady

Sunday Clinics

Various movies about modeling and prototype railroads

MODEL RAILROAD FESTIVAL

Four Seasons at Hemet

237 Four Seasons Boulevard
Hemet, California 92545
Located on West 74, 8 Miles East of 215

Ticket Information

Tickets Available Online or by Mail
Private Community with Gate

No Entry Without Pre-Purchased Ticket

Checks:

Payable to
"Four Seasons Model Railroad Club"
c/o: David Balser
470 Garcia Drive
Hemet, Ca 92545

PayPal:

Use the "Friends & Family" Option
On30Man@gmail.com

For Additional Information Contact:

David Balser
On30Man@gmail.com
(760) 436-6139

Note that this event is not hosted by the LA Division of the NMRA

Around the Division

Compiled by Vic Cavalli

Welcome New Members:

Please welcome our newest Los Angeles Division members:

Frank Hinojosa of Long Beach, CA. Frank joined 11/1/2022

Steve Mandic of Arcadia, CA. Steve joined 11/1/2022

Jack Mayer of Calabasas, CA. Jack joined 11/1/2022

Dr. William Matzner of Simi Valley, CA. William joined 1/1/2023

Michael Sasso of Whittier, CA. Michael joined 1/1/2023

Emily Wensel and Family of Simi Valley, CA. The Wensels joined 1/1/2023

Clark Bauman of Arcadia, CA. Clark joined 2/1/2023

As of February 1st, our Division's membership stands at 188.

Thank You Bob DeMoss for Your Years of Service:

Robert "Bob" DeMoss is likely no stranger to anyone within the Pacific Southwest Region. Bob has been a constant, dependable volunteer within the L.A. Division, as well as the Region, for almost 40 years. He has served in many capacities: twice as Division Director; chair of many convention committees (both at the Regional and National levels). Most recently, he has been our Division's Membership Committee Chair, acting as both recruiter to and ambassador for our area. Sadly, Bob will be relocating out-of-state soon. The Mid-West Region's gain; our loss. His service will be missed, though always appreciated. Thank you Bob! May you encounter only "green signals" during your future adventures.

New Membership Committee Chair / Team Lead:

The L.A. Division's Advisory Board is pleased to announce the appointment of John McGreevy as our new Membership Committee Chair and Team Lead. Effective immediately, John assumes all duties and responsibilities previously performed by Bob DeMoss. John may be reached at: membership@ladiv-nmra.org. Congratulations John and welcome to the Advisory Board.

Around the Division

- Continued

Where's my Focus Survey?

Been looking for your survey? Excuse the delay but those who have offered to assist in mailing them out have simply been overwhelmed with their regular "day-to-day" priorities. Rest assured, however, your survey will be delivered via USPS as soon as we can get it packaged. Then, please take the time to respond. The survey shouldn't take more than 10 minutes to complete and will come with its own return-addressed, stamped envelope. Your reply will shape the direction the Division takes going forward. Make your voice heard.

Now at the Hilbert Temporary:

Though outside the L.A. Division boundaries, a special art exhibit is current open to the public – All Aboard, The Romance of California's Railroads, now through May 6, 2023. Admission is FREE by reservation: www.HilbertMusuem.org. Chapman University, 216 E. Chapman Ave., Orange, CA.(714) 516-5880



WWW.LADIV-NMRA.ORG



**The 2024 NMRA National Convention
“SurfLiner 2024”
will be in Long Beach from August 4 to 11, 2024**

Did you know that the Pacific Southwest Region will be hosting the National NMRA Convention in Long Beach in 2024? Do you have a layout that you would like to share during the convention layout tours?

WE NEED LAYOUTS FOR THE LAYOUT TOURS!!!!!!!

If you would like your layout to be on the tour or, if you are building a layout and think it will be tour ready by August of 2024, please contact Kevin Spady at Layout_Chair@surfliner.org (818-644-7170), or Morrie Fleishman at mefleishman@cox.net (949-351-7715) to get your layout added to our layout list. We will be reviewing all potential layouts over the next year to develop our layout tours and are looking for those awesome layouts that are hiding away in your basement or spare room! Detailed requirements for inclusion in the layout tours will be coming out in the next couple months. This is a first call for layouts and there will be plenty of time to finalize your participation over the next year.

This convention is attended by a huge audience from around the globe and this is a chance to show off your modelling skills and railroad creations! In addition to the recognition of your peers, your layout may qualify for an NMRA Golden Spike award and can earn credit for other NMRA MMR Achievement Awards.

If you, or anyone you know, may be interested, please have them contact Kevin or Morrie.





Financial Report

1/31/2023

-Kevin Spady

Los Angeles Division - Pacific Southwest Region - National Model Railroad Association Banking Reconciliation						
Starting Balance	Deposits This Period	Checks Cut This Period	Checks Cleared This Period	Outstanding Checks This Period	Ending Balance	Notes
\$17,090.82	\$ -	\$ -	\$ -	\$ -	\$ 17,090.82	
\$ -					\$ -	
	\$ -				\$ -	
	\$ -	\$ -	\$ -	\$ -		
				Total	\$ 17,090.82	Consistent with statement 1-31-2023

First Thursday of the Month **Sand House Chats!**

WHAT: Sand House Chats is your chance to find out what others in the Los Angeles Division have been up to the previous month

WHEN: Held the first Thursday evening on each month starting at 7:00pm (chats typically last about an hour)

FORMAT: Roundtable style, very informal, no agenda ...via the Zoom app

WHO: Available to all members of the Los Angeles Division

HOW TO JOIN: Contact superintendent@ladiv-nmra.org for your *free* link

Advisory Board Contact List

OFFICERS

Director/Superintendent
Vic Cavalli
director@ladiv-nmra.org
(805) 680-5826

Paymaster
Kevin Spady
kspady@att.net
(818) 644-7170

Chief Clerk
Nick Lisica
Lisican@gmail.com
(831) 594-7640

TEAMS, COMMITTEES, and CHAIRS

Assistant Superintendent - Vacant

Members' Services Team

Team Chair and Membership Recruitment/Retention – Mike McGreevy
membership@ladiv-nmra.org (805) 907-2367

Members' Services Chair - Mike O'Brien
mike@corbu.us (626) 487-8768

Events Scheduling - Vacant

Communications Team

Team Chair and LA Coupler Editor - Nick Lisica
lisican@gmail.com (831) 594-7640

LA Coupler Assistant Editor - Vacant

Social Media (Zoom) Manager - Kevin Spady
kspady@att.net (818) 644-7170

L.A. Division Webmaster - Kevin Spady
kspady@att.net (818) 644-7170

L.A. Division Assistant Webmaster – Vacant

Publicity/Graphics Manager – Nick Lisica
lisican@gmail.com (831) 594-7640

Achievement Program Chair – Gary Butts, MMR
gary.cajon@gmail.com (714) 842-4980

Contests Chair - Vacant

L.A. Division Historian - Vacant

Nominations and Elections Chair - Vic Cavalli
VicCavalli@comcast.net (805) 680-5826

Non-Rail Coordinator - Vacant

Schedule of Events

Areas Covered:

Counties of Imperial, Inyo, Kern, Mono, Los Angeles, Orange, Riverside, San Bernardino, San Diego, San Luis Obispo, Santa Barbara & Ventura + National Conventions

Last updated: 12/05/2022

Due to the ongoing public health concerns, we recommend checking with organizers to confirm event status.

Recurring

Mondays, Tuesdays, Thursdays - Los Angeles Model Railroad Society "Work" Sessions, Harbor City
Saturdays - Belmont Shore Model Railroad Club Visitation, San Pedro
1st Monday of Each Month - Glendale Model Railroad Society's Verduga Valley Lines Open House, Glendale
1st Thursday of Each Month - Los Angeles Division "Sand House Chat" Zoom Session
2nd Saturday of Each Month - Trains & Coffee Swap Meet, Placentia
3rd Thursday of Each Month - 2024 NMRA National Convention, the *Surfliner*, Zoom Planning Sessions
3rd Saturday of Each Month - Arizona Division Zoom Session
3rd Saturday and Sunday of Each Month (weather permitting) - Orange County Model Engineers Train Rides, Costa Mesa
4th Sunday of Each Month - Southern Pacific Division of TTOS Meet, Anaheim
Last Thursday of Each Month - "Cajon Connection" Zoom Session (w/ Breakout Groups)
Last Saturday of Each Month - "Model Railroad Fellowship Day" - RailMaster Hobbies, Bellflower

2023

March 11 - San Diego Division Bob Treat's Garden Snow Creek Railroad Layout Tour
March 11 - Arizona Division Spring Meet, Scottsdale, Az
March 18 & 19 - Great Train Show, San Bernardino Fairgrounds, Victorville
March 25 – Santa Susana Railroad Historical Society Swap Meet and Open House, Simi Valley
March 25 – Cajon Division Sponsored Open Layout – Gary & Sandy Butts, Huntington Beach
March 25 & 26 – Pasadena Model Railroad Open House, Pasadena

April 1 – Coachella Valley Model Railroad Open House, Indio
April 8 – Joel Shank's Sn3 Rio Grande Southern Railroad Layout Tour, Brawley
April 15 – PCR Daylight Division Meet, Bakersfield
April 15 & 16 – Four Seasons Model Railroad Club's Railroad Festival, Hemet
April 22 – Cajon Division Mini-Meet, Buena Park

Schedule of Events

April 26 - 30 – PCR/FRRS Convention, Rails by the River 2023, Sacramento

May 6 – Southern Pacific Historical & Technical Society Mini-Meet, West Covina

May 6, 7 & 9 – California Southern Model Railroad Club Open House, Norwalk

May 13 – San Diego Division Spring Meet, Vista

May 20 – Santa Susana Railroad Historical Society Swap Meet and Open House, Simi Valley

May 26, 27 – O Scale West (O, S, and Narrow Gauge) Model Train Show, Santa Clara

June 7 – 11 – PSR Annual Convention, the “Grand Canyon Special”, Flagstaff, AZ

June 24 – L.A. Division Sponsored Open Layout – Chuck Fisher, Diamond Bar

July 22 – Roundhouse Gang Model Railroad Club Swap Meet, Moreno Valley

August 20 -26 – NMRA National Convention, the “2023 Texas Express” and Train Show, Grapevine, TX

August 26 – Santa Susana Railroad Historical Society Swap Meet and Open House, Simi Valley

October 5 – 8 – Central Coast Railroad Festival and Layout Tours, San Luis Obispo

October 21 – Roundhouse Gang Model Railroad Club Swap Meet, Moreno Valley

October 25 - 28 – Southern Pacific Historical & Technical Society Convention, Bakersfield

November 4 – Santa Susana Railroad Historical Society Swap Meet and Open House, Simi Valley

November 11, 12 & 14 – California Southern Model Railroad Club Open House, Norwalk

2024

August 4 - 11 - NMRA National Convention, the "*SurfLiner 2024*" and *Tran Show*, Long Beach

For inclusion, please send announcements to: VicCavalli@Comcast.net

Advertisement Guidelines

Interested in Advertising in the LA Coupler?

Please note that advertisements in the *LA Coupler* need to be related to the hobby of model railroading (including prototype railroading). All ads are to be supplied by the owner and published at the discretion of the *LA Coupler* editor and/or the LA Division Advisory Board. If you have questions about the guidelines, please reach out to the editor at Lisican@gmail.com

Publishing guidelines for ads are as follows:

Ad space is sold on an annual basis (four issues, published quarterly), for a full, ½, ¼, or ⅛ page sized ad

A commitment for two issues is requested up front (totaling 50% of the total costs), a full year commitment would receive a discount of 10% on the price.

	Full Page Ad	Half Page Ad	Quarter Page Ad	Eighth Page Ad
Annual Cost	\$100	\$60	\$40	\$25
Minimum 2 Issue Commitment	\$50	\$30	\$20	\$12.50
Full Year Discount (less 10%)	\$90	\$54	\$36	\$22.50

Payments are to be made to the LA Division NMRA. Please contact the editor for details.

Funds from advertising go directly toward supporting your Los Angeles Division of the NMRA.

Los Angeles Division PSR NMRA



NEEDS YOUR HELP!



The Los Angeles (L.A.) Division of the Pacific Southwest Region, NMRA currently has the following volunteer positions open. Each appointment is open ended, i.e., offered without any long-term obligation. Your participation and contribution of time will be greatly appreciated; helping to insure the continued success of the Division; possibly earning you some AP points too!

Assistant Superintendent (new) – working with, and as an extension of, the L.A. Division Superintendent, the assistant superintendent performs tasks assigned him/her that are normally completed by the Superintendent himself. These assignments may include budget generation/review, event definition/approvals, conducting Division Advisory Board meeting in the absence of the Superintendent, as well as performing many other duties of the office.

Assistant Webmaster – working with the L.A. Division Webmaster, the assistant webmaster helps to keep the Division's website working smoothly, its contents up-to-date; adding new or removing outdated contents to its pages in a timely fashion.

Division Events/Calendar Tracking Coordinator (new) – a member of the Membership Committee Team, this individual oversees the creation, scheduling, organizing, and advertizing of events held or sponsored by/within the L.A. Division.

Newsletter and Website Contributors – all L.A. members are encouraged to submit articles and/or photos of their model or prototype railroading interests. Contact liscan@gmail.com (LA Coupler Editor) or kspady@att.net (Webmaster) for details.

Division Historian – responsible for physically collecting and archiving Division history, as well within the pages of the Division's quarterly newsletter, the LA Coupler, and/or on the pages of the Division's website. History may include, but not limited to, previously published issue of the LA Coupler, tracking of members' honors (such as MMRs, Officers, Golden Spike recipients, Member of the Year recipients), or photos from meets, conventions and/or gatherings.

Contest/AP Evaluators (new) – working with the Division Contest/AP Chairperson, Evaluators are taught how to assess models and/or layouts per NMRA Achievement Program standards. Contact gary.cajon@gmail.com for details.

Please Contact Superintendent@ladiv-nmra.org



**For more information on the NMRA
please visit www.NMRA.org**

Special Thanks to Railmaster Hobbies

*9812 Belmont St.
Bellflower, CA 90706
(562) 867-5627
www.railmasterhobbies.com*

Thank you for supporting the LA Coupler!

