

LA COUPLER



[HTTP://WWW.LADIV-NMRA.ORG](http://www.ladiv-nmra.org)

SUMMER 2016



**All Aboard for LA/PSR Convention
"LA JUNCTION"**



Publication Information
The L. A. Coupler

The official publication of the Los Angeles Division, Pacific Southwest Region (PSR). National Model Railroad Association (NMRA).

The LA Coupler is published quarterly by the Los Angeles Division of the National Model Railroad Association and is available online at:
<http://ladiv-nmra.org>.

All materials, articles, and advertising must be submitted to the Editor and in an electronic format. Contact us for a copy of our submission guidelines.

Advertisers may contact the Editor to request guidelines and a rate card.

Subscribers with an e-mail address will automatically receive the PDF version.

Copyright 2016, LA Division Pacific Southwest Region, National Model Railroad Association.

Permission to reprint granted to all affiliates of the NMRA. Others may request permission to reprint from the Editor:

Except for Official reports, opinions expressed are those of the author, and do not necessarily represent those of the L.A. Division, PSR, or the NMRA.

Thank you for supporting the Coupler !

Publication Team:

Editor: Scott Sackett
1264 Alameda Ave.
Glendale CA. 91201
essaness@pacbell.net

Photographers:
Sam Sackett

Electronic PDF Distribution;
Pat & Mona Raymer

SUMMER EDITION
2016

FEATURES

Superintendent Report	3
Directors Report	4
Hello From the Website Guy.....	5
Membership Report	6
Financial Report	7
All Aboard	10
From the Past	11
Los Angeles Division Directory	22
Model Train & Railroad Events	24

LA COUPLER DEADLINES:

Winter Issue - December 1

Spring Issue - March 1

Summer Issue - June 1

Fall Issue - September 1

The LA Coupler is also looking for submissions, articles, or photos. Please forward them to the Editor at;

essaness@pacbell.net

On the Cover...



Railroad photographer Sam Sackett catches the Coast Starlight stopped at Santa Barbara Station.



SUPERINTENDENTS REPORT

To:

Our Los Angeles Division is chugging along. We put on at least four events a year, as required by our bylaws and this year we have already had our Annual Membership Dinner and our SpringRail weekend meet. Coming up soon in September is the Pacific Southwest Region NMRA Convention, the "LA Junction" that our L.A. Division hosts once every four years. This year we are putting on this big four-day convention and we have been working on its organization for years. Then around Halloween we put on our annual meet in Palos Verdes called "Freight Fright." This is a fun meet with various modular model railroad layouts putting on a show. See the notices in this L.A. Coupler for the info on these great upcoming events, our regional convention and our Halloween show.

Next year the regional convention will be in the Cajon Division, so we will looking to have our fourth event possibly be a layout tour. Bob Chaparro has been doing an outstanding job for years in organizing local layout tours. He is again organizing our layout tours for our PSR Regional Convention this year.

We are open to other ideas for L.A. Division events--send any suggestions to me by email at: mike@corbu.us or bring your ideas to our monthly advisory board meeting, as described below. Suggestions might include swap meets, operating sessions, railfan trips, et cetera. This is your Division and we all want to have fun.

Our L.A. Division has three elected officers. Other positions are filled by volunteers, but we always can use more volunteers just to participate and help out. We have a meeting monthly for everyone on the second Thursday evening, currently held at 7:00 pm at the Glendale Model Railroad Society building at 619 Hahn Avenue, Glendale, beside the tennis courts. This is a block north of the 134 and a block west of Pacific Avenue in Glendale, and all are invited.

About 20 dedicated model railroaders have been attending recently and we would love to see YOU!!

Cheers,

Mike O'Brien
Superintendent
LA Div. PSR NMRA
.....





DIRECTOR'S REPORT



The L.A. Division's annual SpringRail event was held to great success on April 23rd in Buena Park. There were several new clinics and, from all appearances, the event was enjoyed by all. With SpringRail behind us, this allows us to turn our focus to the PSR Regional Convention, the **L.A. JUNCTION 2016**.

So, without further ado, and with a nod to David Letterman, I would like to present:

THE TOP TEN REASONS YOU SHOULD ATTEND L.A. JUNCTION 2016

- 10. *You will be really jealous when your friends that attended tell you what a great time they had.*
 - 9. *Your spouse will be really upset with you when they hear what a great time the spouses that attended had.*
 - 8. *See #9*
 - 7. *Where else can you learn to make a bag of Popsicle sticks into an award winning model?*
 - 6. *It will be 20 degrees cooler in Culver City!*
 - 5. *Two words: Dullcote fumes!*
 - 4. *If you don't go, your pin & patch collection will be incomplete.*
 - 3. *If you don't go, your convention car collection will be incomplete.*
 - 2. *If you don't go, you'll have to wait a whole year before you can go to another one.*
- And the #1 reason you should attend*
L.A. JUNCTION 2016:

CLINIC NAPS!

All joking aside, the L.A. JUNCTION 2016 convention promises to be a most memorable convention, which will take place September 21st through September 24th, 2016. Our convention hotel is the DoubleTree Hotel-Westside in Culver City. It is an outstanding venue, with all the amenities one would expect from a first class hotel. We are kicking off on Wednesday night with a welcome reception at Ron Varnell's 1,400 square foot Union Pacific layout in Torrance. Complimentary food and drinks are included, and there will be a chance to operate on the layout. The three days following will be loaded with exciting activities. We are featuring a ride to Santa Barbara on the Vino Train aboard The Silver Splendor, a wonderfully restored 1956 Budd dome car originally run on the CB&Q's Denver Zephyr. In Santa Barbara there are many wine

tasting rooms to visit, with a variety for almost any palate. There are other fun activities available in Santa Barbara. We are currently looking into a tour with an amphibious vehicle that will drive right into the harbor! If Santa Barbara doesn't appeal to you, you may stay on board and ride over the Cuesta Grade to San Luis Obispo (extra fare, box lunch included). Seats are limited on the Vino Train, so you should get your seats reserved as soon as possible. Other prototype tours include a 2 ½ hour walking tour of Los Angeles Union Station, with access to areas not normally available to the public, and a tour of the new Metro Light Rail yard and maintenance facility in Monrovia. The L.A. JUNCTION convention team is planning over 60 clinics, and has 28 layouts on the layout tour so far. Other events include our Hobo Auction on Thursday night and a swap meet under a 3,000 square foot tent on Saturday. For those who will be able to stay in town after the convention, we have a very special brunch offer at The Magic Castle, an exclusive restaurant and magic club in the Hollywood Hills. The Magic Castle is usually only available to members and there invited guests. Ron Varnell has made arrangements for a limited number of convention attendees to go for brunch on Sunday. This is also an extra fare item. Not to forget our non-rail conventioners, we have a team setting up activities that are sure to please, with fun things to do at the hotel, and perhaps a trip to one of our outstanding local museums.

These are just some of the great things in store for you at the L.A.JUNCTION 2016 convention. For more information and to register please go to www.psrconvention.org/lajunction.

On behalf of the L.A. JUNCTION 2016 convention team, we look forward to seeing you in September!

Pat Raymer
Director-Los Angeles Division
LA Div. PSR NMRA
.....



HELLO FROM THE WEBSITE GUY

My article this time is about, well, websites. I have been the webmaster for the Los Angeles Division for quite a while now and if you haven't ever been to our website (<http://www.ladiv-nmra.org/>) it is definitely worth a visit. On the site you will find pages with news, local club layout information and photos, as well as events, the LA Coupler and more!! Right now there is also a link to the LA Junction convention website where you can get information about and register for this very exciting event, which will be taking place from September 21st. to the 24th.

The advent of the internet has revolutionized our hobby as well as created challenges in some areas of it. I do quite a bit of locomotive painting, in many cases for friends in my model railroad club or a small group of other modelers. This often requires me to find the necessary prototype photos for reference. Before the www thing came along I would have had to keep a selection of books that would make my local library look like a teeny tiny collection. Now all I need is my computer and printer to get the reference photos I need. Sometimes it takes a bit of searching but between Google and the websites of railroad historical societies I can get what I need. Most model railroad magazines also have an online version and/or have archives of articles that were previously only available in print. When our club switched over to DCC and I needed to learn how to hard wire decoders into my locomotives that didn't have harnesses I went to the internet and found all the information I needed. Even social media has gotten into the act. I am the member of a modeling forum dedicated to the Southern Pacific (my main railroad of interest) and a Southern Pacific Facebook page. Both of which are incredibly valuable for my Southern Pacific model projects.

Along with the benefits of going on line are some complications for some in the model railroad hobby, specifically the brick and mortar hobby shops. For most people it is more convenient to go to their

computer and shop rather than go to the local hobby shop. EBay and online hobby shops offer very competitive prices and 24/7 access, which is very hard to resist. Some brick and mortar shops are staying in the game by having websites themselves where customers can purchase items online as well as over the counter. I myself spend money online but try to do business at the traditional store as often as possible. I am not advocating either way of making your hobby purchases, simply pointing out how much technology has changed the way we buy our hobby supplies and equipment. Of course, the internet is the perfect place to find and buy discontinued equipment and affordable (relatively speaking) brass models.

For better or worse the computer has become a central part of our daily lives and progress in this field shows no sign of slowing down. Who knows what the future will hold for computers and model railroading. Perhaps someday we will go to a website and custom design a model of a car or locomotive that has never been made before. One thing is for sure, the internet revolution has brought changes to our hobby that most of us could never have foreseen when we got our first model trains.

Tim Johnson
Webmaster
LA Div. PSR NMRA

.....



FINANCIAL REPORT

11:35 PM
 08/03/16
 Accrual Basis

LADivPSRNMRA
Balance Sheet
 As of August 3, 2016

	Aug 3, 16
ASSETS	
Current Assets	
Checking/Savings	
Checking	
Advisory Board Expenses	592.88
Total Advisory Board	592.88
Bank Fees	641.81
Banquet Expenses	277.71
Total Banquet	277.71
Build a Memory Income	-1,200.89
Total Build a Memory	-1,200.89
Childrens Coloring Boxcar Expenses	506.37
Total Childrens Coloring Boxcar	506.37
Elections Expenses	913.89
Total Elections	913.89
Freight Fright Modular Meet Expenses	299.50
Freight Fright Modular Meet Income	-399.03
Total Freight Fright Modular Meet	-99.53
Regional Convention Expenses	15,583.58
Regional Convention Income	-20,923.34
Total Regional Convention	-5,339.76
SpringRail Expenses	4,648.71
SpringRail Income	-5,724.07
Total SpringRail	-1,075.36
Checking - Other	12,487.89
Total Checking	7,705.01
Savings	
Intrest	-1.70
Savings - Other	5,102.34
Total Savings	5,100.64
Total Checking/Savings	12,805.65
Total Current Assets	12,805.65
TOTAL ASSETS	12,805.65
LIABILITIES & EQUITY	
Equity	
Opening Balance Equity	12,805.65
Total Equity	12,805.65
TOTAL LIABILITIES & EQUITY	12,805.65

James L. Keena
 Chief Clerk/Paymaster
 LA Div. PSR NMRA

.....



“RAILETTES” REPORT

My name is Annette Palmer and I am a member of the *Orange County Modulo Railroad Club* and have been since 2013. I enjoy all parts of our club from meeting new people to learning more about trains. This will be my 3rd convention since I have been a member of the club.

I am very excited to be able to help with this years convention and have arranged some clinics and would like to have even more if any of the Railettes would like to teach others a new craft.

We have some new ideas this year for the ladies to try: making key chains, making a wreath, making a ornament and making a purse without sewing are just a few. They are easy items to do and we hope that all the ladies will enjoy doing them. Roberta Fleishman and I also have set up some of these to be able to do on family day so that kids have more to do. I have listed the clinics below that are set up at this time

The following clinics have been arranged for this years convention with the help of Roberta. They are as follows:

- * Welcome reception and white elephant swap. (Gift value to be around \$15.00 wrapped in newspaper)*
- *Making key chains cost \$1.00*
- *Make an ornament cost \$1.00*
- *Make a Wreath cost \$8.00*
- *Make a purse without sewing. cost \$6.00*
- *Collecting railroad china*

I hope to see you in September and think that you will find the clinics at this year’s convention a fun one to attend!!

Annette Palmer
Railette Chair
LA Div. PSR NMRA
.....



IT'S TIME TO SPRING INTO ACTION

2016 Pacific Southwest Regional Convention “L.A. Junction”

The PSR Convention L.A. Junction is just about one month away and if you have not signed up, ***you do not want to miss*** out on some exciting clinics, tours, and great fellowship with fellow model railroaders. You can check out the complete convention schedule and clinics on the web site www.psrconvention.org/lajunction.

Here is a brief outline of some of the key events:

- The convention starts out Wednesday night with a welcome reception/Santa Maria Style BBQ at Ron Varnell's layout. This is a no cost event to all full convention registered delegates. You do need to RSVP for the dinner.
- Thursday has a full day of clinics, layout tours and tours to the Metro Light Rail Maintenance Facility and LA Union Station where you will see parts of the station not normally open to the public. Thursday finishes up with a Hobo Auction with hundreds of items for you to win.
- Friday starts out with a full day tour for 48 delegates on the Silver Splendor to Santa Barbara, for others there is a full day of clinics, layout tours and a tour to the Getty Center.
- Saturday brings the Hobo breakfast, swap meet, more clinics including a special clinic for families with things the kids can build and do. There will also be layout tours and the convention ends with the Awards Banquet with Wayne Penn guest speaker Saturday night.
- And just added, NCE will be presenting a special clinic on Friday all day and Saturday am to demonstrate their product! There will be a tech support person there to answer any and all questions you may have about their system.

As you can see there are lots of things to do and see at this convention and guess what it is right in your own back yard. The convention hotel is the Double Tree located in Culver City just off the 405, 6161 W. Centinela Ave.

You cannot attend the full convention well we have a day rate of just \$25, so what are you waiting for sign up today on line and join in on the fun.

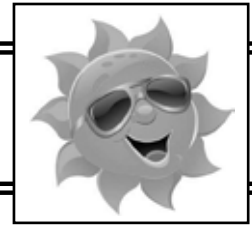
I hope to see all you Los Angeles Division NMRA Members there.

Carl Heimberger
PSR President

.....



SUMMER TIME FUN



No need to check the thermometer to know summertime is in full tilt here, with its longer daylight hours and days full of activities. It is also time for vacations for many of us, to get away, enjoy and have some fun. Opportunities to travel, see family, friends or sightsee and visit new and interesting places or to just take time to relax. For those of us that like model railroad events, there are numerous train shows and railroad related swap meets to enjoy. It is also the time for the National Model Railroad Association Convention and National Train Show in Indianapolis from July 3rd to the 10th. For more information, this is the NMRA Convention website <http://www.nmra2016.org/>

Also, don't forget to plan on attending your upcoming 2016 PSR Regional Convention, Los Angeles Junction in Culver City from September 21, to 25, 2016. Easy online registration is available at the Convention website <http://www.psrconvention.org/lajunction/>

Included as part of your Convention Registration at no additional cost is the Wednesday evening **Welcome Reception** that is being sponsored by *The Original Whistle Stop, Inc.* A quality first class meal is being catered by *Santa Maria B.B.Q.* A no host bar will be provided along with casino type entertainment and *Ron Varnell's* 1,400 Square Foot HO Scale layout to enjoy. Please let us know how many we can expect by RSVP at <http://www.psrconvention.org/lajunction/registration.html>

As of this writing, spaces are still available for this year's prototype tours, which will provide a wide range of enjoyment:

From the Thursday morning up to date tour of the new **Metro Rail maintenance facilities**. Thursday afternoons 2-1/2 hour behind the scenes **walking tour of historic 1939 Los Angeles Union Station**, to the all day Friday **vintage California Zephyr dome car ride** along the beautiful California coast line to Santa Barbara, which includes on board prepared breakfast on the northbound leg of journey and dinner on the way back. There is even an **optional extension all the way to San Luis Obispo** that will

include a provided box lunch. Become involved in making your Regional Convention the most memorable ever with many great clinics, prototype tours, layout tours, layout operation sessions and many other events to participate in and enjoy. There are even wonderful opportunities for volunteering, assistance is needed in the following areas:

- *Registration Desk*
- *Company Store*
- *Give a clinic and share your modeling insights, tricks and knowledge*
- *Clinic Room Hosts*
- *Contest Room Security*
- *Contest Judges for NMRA Merit Evaluations*
- *Bus Captains for Layout and Prototype Tour*
- *Raillette Activities*
- *Hobo Auction Runners*
- *Convention Guides*
- *Family/Children's Day Assistants*
- *Swap Meet Assistants*

Volunteer and join your fellow model railroaders, even for just an hour or two will make a big impact in success of your Convention. Volunteering gives you the enjoyment and opportunity to meet and interact with old friends, acquaintances and to meet and gain new ones. Please contact Mike Allee, Volunteer Coordinator to join the fun.

Contact your Division Superintendent, President, Director or Chief Clerk to let them know you willing to help make your PSR Regional Convention a Success!

Sincerely,

James L. Keena
Chief Clerk/Paymaster
LA Div. PSR NMRA
.....

2016 PSR CONVENTION REGISTRATION

The 2016 Pacific Southwest Regional Los Angeles Junction Convention is fast approaching, but there is still time for you to register. We have made registration as easy as possible for you on the Convention website:

<http://www.psrconvention.org/lajunction/>

Registration is just a simple click away and convenient payment is available through PayPal. There is a printable registration form if you would prefer to mail your registration in with a check or money order.

All of the tours are still available, including the Silver Splendor dome car ride to San Barbara as well as the extension to San Luis Obispo. This trip includes breakfast and dinner prepared about the train.

The Convention Schedule has been posted to the website and is downloadable in case you want to print it out as a planning tool. Clinic Presenter and descriptions of the clinic being presented are also listed for your planning convenience.

Included as part of your Convention Registration at no additional cost is the Wednesday evening Welcome Reception that is the gratefully sponsored by The Original Whistle Stop, Inc. This quality first class meal is being catered by Santa Maria B.B.Q and will include tri-tip, chicken and all the fixings. A no host bar will be provide along with casino type entertainment and Ron Varnell's 1,400 Square Foot HO Scale layout for a full evening of enjoyment with fellow model railroaders.

Look forward to seeing you at the Convention.

Sincerely,

James L. Keena
Registrar
2016 PSR Los Angeles Junction Convention
.....



FREIGHT FRIGHT!!!



The Los Angeles Division of the National Model Railroad Association is holding its Annual Halloween "*Freight Fright*" modular model train show at the;

**Los Angeles County South Coast Botanic Garden
26300 Crenshaw Boulevard, Palos Verdes Peninsula, CA 90274**

**Saturday, Oct. 29 from 9:30am to 4pm &
Sunday Oct. 30, from 10am to 4pm.**

There will be displays of several different scales of model trains running on connected modules. Different size trains will be running on six different displays. The model railroad sizes (scales) on exhibit will be O (1:48) in 30" gauge, S (1:64), HO (1:87), N (1:160) and Z (1:220) in standard gauge (4' 8.5" between the rails) and Traction in HO scale.

The county arboretum charges a small admission fee for access to the garden and there is no additional fee for the show. And while you are here, be sure to walk thru the gardens as they are very well done.

Adults: \$9

Seniors (62 and over): \$6

Students (with ID): \$6

Children (5 – 12): \$4

Children (4 and under): FREE

26300 Crenshaw Boulevard

Palos Verdes Peninsula, California 90274

SCBG phone (310) 544-1948

For further information, contact Lloyd Lehrer

lloydlehrer@gmail.com (310)951-9097


SOUTH COAST
BOTANIC GARDEN

LOS ANGELES CONVENTION:

What's there to do???

Special report for the L.A. JUNCTION 2016 Convention!!!

This is a special report on the Vino Train, L.A. Union Station walking tour and our Hobo Auction. The Vino Train tour takes place Friday morning. You will be transported from the convention hotel to L.A. Union Station by chartered bus, where you will board the Silver Splendor, a 1950's era dome car. As you depart Union Station, a wonderful breakfast buffet will be served. The train follows the coast with beautiful views of the Pacific Ocean. When you arrive in Santa Barbara, there are a number of activities available to you. There is wine tasting in the "Funk Zone", or in another area a short shuttle ride away. There are numerous wine tasting rooms in Santa Barbara. If you are not into wine, there are other activities in Santa Barbara, such as Stearn's Wharf or the amphibious vehicle tour. If none of this suits your fancy, you may (for an extra fare, box lunch included) stay on board and ride to San Luis Obispo. This portion of the ride goes up the Cuesta Grade, with more beautiful coastal scenery. There is a short layover in San Luis Obispo, where you may explore the depot area. On the return trip, dinner and beverages will be served. Upon arrival at L.A. Union Station, you will be transported by chartered bus back to the convention hotel.

The L.A. Union Passenger Terminal walking tour takes place on Thursday. It is a 2 ½ hour tour of the depot. Union Station is the last great railway station built in the United States. When it was opened in 1939, there was a three day celebration, attended by nearly half a million people. It is a unique combination of Spanish Colonial Revival and Art Deco styles. The tour covers the architecture, art, culture, and social history of this great Los Angeles landmark. You will be allowed access to areas not normally open to the public. Transportation to and from Union Station from the convention hotel is

provided by chartered bus.

Our famous Hobo Auction will be held Thursday night, immediately following the general membership meeting. For those of you that have never participated in the Hobo Auction before, it is loads of fun! This is how it works: you will have the opportunity to purchase sheets of tickets that have 25 small tickets on each with the same identification number. This number matches a stub that you retain to claim your items. The small tickets are placed by you in paper bags next to the item on which you would like to bid. If your number is called, you receive that item! There will be hundreds of items from major manufacturers and suppliers-and not just railroad items-there will also be many items for the Railettes as well. We hope you will join us for this great event!

Pat Raymer-Director
L.A. Division



Original Photo by Bogray

LA CONVENTION SNEAK PREVIEW:

Los Angeles Metro Light Rail Maintenance Facility Tour

During the upcoming PSR Convention a tour of the Monrovia Metro Light Rail Maintenance and Operations Facility is scheduled for Thursday, September 22, 2016. The tour is available to full time and single day convention attendees.

Los Angeles Metro Rail is the fastest growing urban light rail system in the country. In March of this year the Gold Line extension from Pasadena to Azusa started service. It is planned to continue the line east to Montclair where it will connect with the San Bernardino Line of Metrolink (a regional commuter rail). The 23.9-mile extension of the Gold Line from Pasadena follows the roadbed of the former Atchison, Topeka & Santa Fe Railway's Second Division through the foothill cities in the northern San Gabriel and Pomona Valleys.

Ridership is higher than expected on the new line with around 32,000 riders per week. Of all riders surveyed, 70 percent said that they were new users of the Metro system and 66% said they had given up commuting by car.

To maintain the light rail vehicles of Metro's growing fleet a new Maintenance and Operations Facility was added in the city of Monrovia. The facility covers 24 acres and has six miles of track

to handle up to 20 trains. The facility which includes a 132,000 square foot shop building cost \$265 Million and was opened in early 2015. The facility employs 200. Work on trains includes routine and heavy repairs, wheel truing, body repairs, painting, storage, cleaning and washing. The convention tour will depart the hotel at 7:30 in the morning and arrive at Los Angeles Union Station where the tour begins. We will board the Gold Line from Union Station to Monrovia which is a 36-minute trip by rail. A representative of Metro Rail will accompany us on the trip and provide a narrative about Metro Rail, the Gold Line and the history of the AT&SF right of way. When we arrive at the Maintenance and Operations Facility we will be given a walking tour (about an hour) and shown the different areas and functions of the facility. After the tour we will ride the Gold Line back to L.A. Union Station which is the end of the tour. After the tour attendees have two choices, they can ride the bus to the convention hotel, or grab a quick lunch and join the L.A. Union Station tour that starts at 1:00 PM.

The cost of the tour is \$32.00.



Metro Operations & Maintenance Facility. Courtesy of RNL Architects.



SOUTHERN CALIFORNIA CLUB LAYOUT 2016 OPEN HOUSE SCHEDULE:



ANGELS GATE HI-RAILERS, 3601 South Gaffey Street
San Pedro, California
<http://www.angelsgatehirailers.org/>
October 15 & 16th - Open House

BELMONT SHORE MODEL RAILROAD CLUB, 3601 South Gaffey Street - Box 2
San Pedro, California
<http://www.belmontshorerr.com>
October 15 & 16th - Open House/Swap meet (15th)
10:00 am - 4:00pm

CALIFORNIA SOUTHERN MODEL RAILROAD CLUB, 12140 E Firestone Blvd,
Norwalk, CA 90650
<http://www.trainweb.org/calsomrr/>
November 12, 13 & 15th - Open House

COACHELLA VALLEY MODEL RAILROADERS, 43714 Commanche St.
Indio, CA 92203-2630
<http://www.cvmrr.com/>
November 12th - Open House
Riverside County National Date Festival Fairgrounds 82503 Highway 111 Indio, CA 92201
10:00 am - 2:00pm

LOS ANGELES MODEL RAILROAD SOCIETY (LAMRS), 14005 South Crenshaw Boulevard, Unit G ;
Hawthorne, CA 90250
<http://www.lamrs.org/>
October 1 & 2nd - Open House
10:00 am - 4:00pm

GLENDALE MODEL RAILROAD SOCIETY, 619 Hahn Ave.
Glendale, CA 91203
<http://www.gmrrc.org/>
November 5th, Saturday 1:00pm to 4:00pm / 6:00pm - 8:30pm
November 6th, Sunday 1:00pm to 4:00pm
November 7th, Monday (Open House) 7:30pm to 10:00pm

HIGH DESERT MODULAR MODEL RAILROAD CLUB, Newhall
Wm. S.Hart Park, 24151 Newhall Ave. Newhall, Ca. 91321
<http://www.hdmmrc.com/>
September 10th 10:00 to 5:00 Saturday
September 11th, 10:00 to 4:00 Sunday
October 15th
October 16th
California City Renaissance Festival & Model Train Show.
California City Central Park 10460 Heather Ave. California City, CA 93505



SOUTHERN CALIFORNIA CLUB LAYOUT

2016 OPEN HOUSE SCHEDULE:



HIGHLAND PARK SOCIETY OF MODEL RAILROAD ENGINEERS, 854 Broadway
San Gabriel, CA 91776
<http://www.highlandpacificrr.com/>
November 2, 5 & 6 Open House (Wed 7pm- 10pm)

ORANGE COUNTY MODEL ENGINEERS, 2500 Placentia Avenue
Costa Mesa, CA 92626
<http://www.ocmetrains.org/>
September 22 - 26th

PASADENA MODEL RAILROAD CLUB, 5458 Alhambra Ave.
Los Angeles, CA 90032
<http://www.pmrcc.org/>
November 19 & 20th - Open House*
(Currently converting to DCC - dates/times may change)

SANTA SUSANNA RAILROAD HISTORICAL SOCIETY, 6503 Katherine Road,
Simi Valley, CA.
<http://www.santasusannadepot.org/Clubhome.html>
August 27th - Swap Meet/Open House
 Swap Meet starts at 7:00 a.m. to 10:00 a.m.
 Open House starts at 10:00 a.m. to 4:00 p.m.
October 22nd - Swap Meet/Open House
 Swap Meet starts at 7:00 a.m. to 10:00 a.m.
 Open House starts at 10:00 a.m. to 4:00 p.m.

SLIM GAUGE GUILD, 300 S. Raymond Ave. (Basement)
Pasadena, CA 91105
<http://www.slimgaugeguild.com/>
Sunday, November 3, 2013 (10am-6pm)
Tuesday, November 5, 2013 (6pm-10pm)

TEHACHAPI LOOP RAILROAD CLUB, Tehachapi
c/o Tehachapi Valley Parks & Recreation
Gymnasium at West Park
410 West D Street, Tehachapi, CA 93561
<http://www.tlrc.club/>
Saturday, August 13th 10 am to 5 pm Open House
Sunday, August 14th - 10 am to 4 pm Open House
Saturday, November 12th 10 am to 5 pm Open House
Sunday, November 13th 10 am to 4 pm Open House

2016 PSR/NMRA Convention “L.A. Junction”



September 21st – 25th 2016

Convention Hotel
The DoubleTree Hotel, Westside/Culver City



Close to LAX Airport, 405 & 105 Freeways



**Los Angeles Junction
Pacific Southwest Region Convention
September 21-24, 2016
Presented by: Los Angeles Division, PSR
Double Tree Los Angeles Westside, 6161 W. Centinela Ave.
Culver City, CA 90230 1-866-8199-5320**



Group Code: NMR Cutoff Date for Group Rate Reservation is August 30, 2016

NMRA #: _____ Registration Date: _____
 Name (s)* (1) _____ (2) _____
 * As you want to appear on your badge
 Address _____ Phone _____
 City _____ State & Zip _____ Cell _____
 E-Mail _____
 Region & Home Div: _____ Primary Scale _____

Item	Qty	Each	Total
Adult Rail (NMRA Member) Registration & Banquet (__ Beef __ Salmon __ Veg)		\$ 115.00	
Adult Rail (NMRA Member) Registration Only		\$ 75.00	
Adult Family (with NMRA Member) Registration & Banquet (__ Beef __ Salmon __ Veg)		\$ 90.00	
Adult Family (with NMRA Member) Registration Only		\$ 65.00	
Youth (with NMRA Member) Registration & Banquet (__ Beef __ Salmon __ Veg)		\$ 80.00	
Youth (with NMRA Member) Registration Only		\$ 55.00	
NMRA Member One Day Registration Only (__ Wed. __ Thur. __ Fri. __ Sat.)		\$ 25.00	
Saturday Family Day Pass for Entire Family (Includes Signup for 6 Month Trial NMRA Membership)		\$ 20.00	
Non NMRA Member Surcharge (Includes Signup for 6 Month Trial NMRA Membership)		\$ 10.00	
Banquet Only (__ Beef __ Salmon __ Veg) Saturday		\$ 85.00	
Ladies Rail Fan Lunch		\$ 20.00	
Convention Patch		\$ 5.00	
Convention Pin		\$ 5.00	
Convention Shirt Men's S M L XL Short Sleeve or Pocket Polo (Circle Size & Type)		\$ 30.00	
Convention Shirt Men's 2XL 3XL 4XL Short Sleeve or Pocket Polo (Circle Size & Type)		\$ 35.00	
Convention Shirt Lady's S M L XL Short Sleeve or Polo (Circle Size & Type)		\$ 30.00	
Convention Shirt Lady's 2XL 3XL 4XL Short Sleeve or Polo (Circle Size & Type)		\$ 35.00	
Convention Car HO Scale		\$ 30.00	
Convention Car N Scale		\$ 24.00	
(Extra Fare)			
MetroRail Maintenance Facility Tour (Includes Bus & Light Rail Transportation) - Thursday ◆		\$ 32.00	
Silver Splendor Dome Car Trip to Santa Barbara (Includes Breakfast & Dinner served in the car) - Friday ▲◆		\$ 135.00	
Silver Splendor Extend Trip to San Luis Obispo (Includes box lunch served in the car) - Friday ▲◆		\$ 85.00	
Los Angeles Union Station Behind the Scenes Walking Tour (Includes Bus Transportation) - Thursday ◆		\$ 37.00	
Magic Castle Brunch & Magic Show - Sunday Morning ▲●		\$ 65.00	
Total			

▲ This Extra Fare Reservation is non-refundable unless tour is canceled by Convention Committee

◆ Tour is Limited to 48 Persons ● Tour is Limited to 24 Persons

Credit Card Visa M/C Circle Card Type
 Card Number: _____ CV# _____ Cash _____
 Issued To: _____ Please Print _____ Check _____
 Expiration: _____ Signature: _____ C/C _____
 Month Year

Make Checks Payable to: Los Angeles Division

James Keena, PSR 2016 Registrar, 12341 Heritage Springs Drive, Santa Fe Springs, CA 90670
 Registrar's Contact Information: Email: pjkeenawhittier@msn.com Phone: (562) 325-3846



Family Day Special



At the 2016 PSR/NMRA, Convention, LA Junction

Saturday, September 24, 2016 from 8:00 am to 4:00 pm

At the Double Tree Hotel 6161 W. Centinela Ave, Culver City, CA 90230

Not a member of the National Model Railroad Association? Well here is an opportunity your family to enjoy all the Saturday Convention events except the awards banquet for just \$20 and \$7 parking.

For convention information visit www.psrconvention.org/lajunction.

Here is what you and your family can attend;

- The convention swap meet with many train items for sale starting at 8:00 am.
- Clinics specially designed for beginning modelers and kids 9:30 to noon.
 - How to take that trains set from Christmas and build a small layout.
 - What is scale and the different sizes of trains? Z through G.
 - Build 2 types of trees, one fir and one canopy tree.
 - Painting rocks.
 - Build a 9 inch square diorama including shrubs and ground covers.
 - How to tune up your train set to run better.
 - The proper way to lay track for your layout.
 - For the younger modelers there will be a card stock box car to color.
 - You can run a train on our small layout.
 - And several family craft projects to build.
- You can also attend any of the other scheduled convention clinics on Saturday.
- Tour several home and club model railroad layouts in the area maps will be provided.

And one adult member of the family will receive 6 months of the NMRA Magazine, along with a Rail Pass to the NMRA.

.....
Family Day Registration Form

Name(s) 1) _____ 2) _____

3) _____ 4) _____

Address _____ Phone #: _____

City: _____ State/zip _____ Cell#: _____

E-mail: _____

Send to: James Keena, PSR Registrar, 12341 Heritage Spring Drive, Santa Fe Springs, CA 90670

Along with \$20, you will pick up your entry badges on Saturday at the Convention Registration Desk.

You can also register on line go to convention web site – Special Events page.

IT'S HERE!

NEW FORMULA 11
 the NEW MIRACLE CEMENT
 15 Ingredients Combined
 FASTER DRYING for FASTER BUILDING

Today's Sensation Among Model-builders! FORMULA 11
 has everything . . . everything a cement should have.

Dries in a Few Seconds and Sets More Solid • Waterproof • Crystal-clear • Toughest • Oilproof • Transparent • Greatest Flexibility • Resists Heat • Positively will not jell • Impervious to Hot and Glo-Fuels • Resists Corrosion • Most Economical • Improved Tube—no drying out or hardening.

today at ALL hobby and model shops

Bob Roberts
110 W. 7th AVE.
GARY, INDIANA
GET YOURS NOW

INSIST ON
Rite-Pitch
 FORMULA
 11

MODEL
 HOBBY
 CEMENT
 formula
11

only
10^c

FASTER DRYING
 FOR
 FASTER
 BUILDING
 CRYSTAL CLEAR

OIL PROOF
 WATER PROOF

Kalmbach Publishing, Ad - January 1949

FLAT SPOTS:
 FEATURING RON WESTLUND

HARRY WAIT!!!
 THATS NOT WHAT I MEANT BY A
FROG JUICER!!!

Los Angeles Division NMRA
 Next Board Meeting
Thursday, September 8th, 7:00 PM
 GMRRS
 619 Hahn Ave. Glendale CA. 91203

USING 3D TOOLS TO SCRATCHBUILD

What really matters on the most basic level of scratch building is the collection of data. Armed just with pencil and paper, some measuring devices and a camera, quality primary source material can be obtained for modeling.

While there is a constantly growing resource of plans in magazines and books, including wonderful, old, digitized, out of copyright, and public domain works on-line. But if at all possible, I like to gather my own source material.



Completed "Johnson House" Model

For example, my Johnson House project, in which I approached the owners of the house and actually knocking on their door and introducing myself. Explaining what I wanted to do, who I was (an artist all my life), and why I was at their home. They were living in a quintessential example of a very charming Southern California Craftsman bungalow initially constructed in the early thirties... and asked as nicely as I could, "May I have permission to measure and photograph?". While this approach doesn't always work, but when it does, you have an excellent opportunity to document our built environment, record local history, and create a very personal connection with others and the models that you construct.



"Johnson House" CAD Model

So to that end... recently I went to the California Oil Museum in Santa Paula, California to visit their collection of early 20th century gas pumps. Which turned into a very interesting day. At first my digital camera wasn't happy with its data card and refused to take images, so at this

point, an elderly gentleman started talking with me about the collection. It turns out that he was the man responsible for initially starting the museum in 1950 and he had worked for 38 years at Union Oil.

Luckily, I was able to coax my camera to recognize its data card and able to snap several photographs of the museum's early twentieth century gasoline pumps. They were next to a seven foot (eighty-four inch) door that was very useful for scale. I also took the time to make a sketch with some pertinent measurements taken with a tape measure.



Now that I have this raw data, I can generate a working drawing. This can be done "old school way", with pencil and paper, ruler and 'T' square or today, with a computer CAD (Computer Aided Design) software. I typically use a computer to generate my working drawings.

The process begins by using a photo, taken from a position well back from, and of a representative view of the subject, into a drawing program as a background image to draw upon. I prefer to scale the image inside the software to represent the full size object; this allows me to work in real world units.

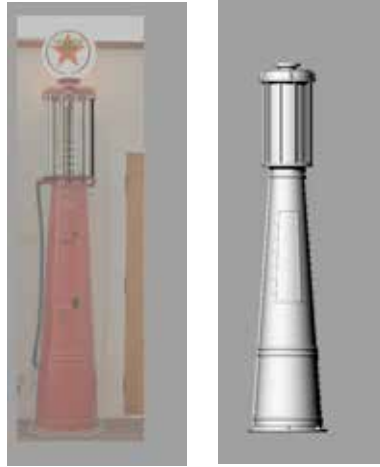


Pump details sketches

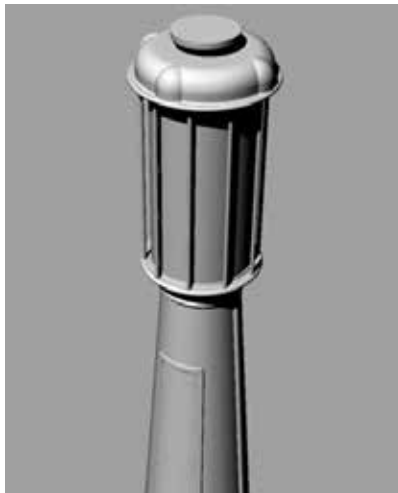
There are many software packages to choose from that have this basic capability. If you already have a CAD program, great. If not, prices range widely from free on up, and programs can be found with a Google search.

USING 3D TOOLS TO SCRATCHBUILD

Initial line work is drawn into a separate layer on top of a photograph. When that is accomplished, I scale a copy of the drawing to 1:87 proportions for HO scale and work from those dimensions.



I usually also produce a 3D model. For most, this will be an unnecessary step, but for my purposes this is done so that I can better see the desired results and to create tooling paths for fixtures, and the molds that I use in my modeling work.



Williams gas station progress - Step 1

Your editor was hoping that I would have a photograph of the finished gas pump that could be inserted here to complete this article. But since that physical model has not yet happened, I hope for next time I will be able to show you how I go from a digital model to a master pattern. Until then thank you for your interest.

Regards,
Thomas Scott Nelson

Thomas Scott Nelson has been an artist all his life; drawing, painting, printmaking, graphic design, illustration, and music. He also has always been building things; models, wood working, magic props, and sculpture. In the late eighties, Thomas was a model maker for Disney Imagineering, then working for Disney Disney Virtual Reality group creating digital environments and a decade later creating visualization work for architects and developers.

After acquiring experience with lathes, mills and CNC programming, Thomas set up the “Muriel Nelson Miniature Memorial Machine Shop”. His initial project was building an 0-4-0 locomotive. His current architecture project is the “Johnson House” kit. You can view this structure, and much more, in greater detail at his website, <http://www.tsndesign.com>.





Kalmbach Library

NOTE: As announced previously, we plan to merge the NMRA Library with the CSRM Library in Sacramento, CA to create one of the largest railroad specific libraries in the USA. When we sold the Headquarters building, we packed all the reference material in anticipation of the merger. The merger has been delayed by CSRM, but is still moving ahead. We did not make plans to re-create the Library at our new more efficient office location. We can still provide very limited services (copies and scans of some materials), but we will not be able to provide full research capabilities again until we complete the merger (timing TBD, but estimated in 2016). We apologize and are working with CSRM for them to absorb our collection as quickly as possible within their resource limitations. We'll do our best to meet your needs, but our reference collection is mostly packed away and we do not have room to unpack it.

About the Kalmbach Library

Who We Are:

Since 1986, the A. C. Kalmbach Memorial Library has housed the archives for the National Model Railroad Association and aided its members in answering research questions.. Members of the NMRA do receive priority attention and receive discounts on services and publications. (NOTE: We are merging our Library with the California State Railroad Museum Library to create an even larger research Library. Watch for an announcement in 2015-2016.)

Doing the Research for You:

We answer thousands of research questions a year covering topics from paint schemes to builder's drawings, kit instructions to layout plans. You may have a specific idea of what you need, such as a listing from a 1928 Official Railway and Equipment Register for the Chicago and Northwestern Railroad. Or, you may need to know what type of storefronts were in a certain city on the ATSF during the 1950s, but you have no idea where to begin. We're here to help.

What to Do with Your Railroad Collection:

Have books, magazines, pictures, slides, negatives, videos, model or prototype railroad equipment you wish to dispose of? See Making Donations for more information, including options for selling collections.

How to Contact Us:

To place a research request or photocopy order, please see Research Requests for details. To order publications or duplicate materials, rent a video, or other questions, please call (423) 892-2846, FAX (423) 899-4869, or email nmraops@nmra.org . Written enquires may be directed to:

Kalmbach Memorial Library

P.O. Box 1328

Soddy Daisy TN 37384-1328

The Kalmbach Memorial Library is in transition and is currently not open to members or the public.

The Kalmbach Library has a large collection of DVDs and VHS tapes available for rent. These videos cover a variety of subjects for model railroaders including prototype railroads and modeling instruction.

Note: Video rentals are available for members only. Cost per tape/DVD is \$5.00 postage paid. When a title has more than one tape the price is multiplied accordingly.

(Example: A video with two tapes costs \$10.00)

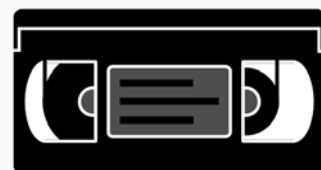
Members in the United States can contact:

nmraops@nmra.org

Members in Canada can contact:

librarian@nmracanda.ca

(Unless otherwise noted the format is VHS, NTSC)



DON'T JUST DREAM ABOUT TYCO...GET A TYCO CATALOG AND LEAVE IT WHERE YOUR FAVORITE "SANTA CLAUS(S)" WILL SEE IT!

BOY! A TYCO OFFICIAL "PETTICOAT JUNCTION" HO ELECTRIC TRAIN!
* (C) WAYFILMS, INC.

MY CHRISTMAS MONEY'S GOING TO BUY ME A TYCO HO TRAIN SET... BUT WHICH? THERE ARE 19 DIFFERENT SETS, NOT COUNTING ROAD NAMES!

WOW! IT'S A TYCO GRAND PRIX RACE SET. WHAT A BEAUTY.

WATCH MY SMOKE NOW WITH THIS LINE-UP OF TYCO'S HOTTEST HO RACE CARS.

TYCO'S PETTICOAT JUNCTION
HO SCALE ELECTRIC TRAIN SET
AN AUTHENTIC HO TRAIN SET WITH TRACK AND POWER

TYCO'S SPEEDWAYS
HO SCALE RACING & MOTORING

Make it **TYCO**[®]
IF YOUR DEALER IS OUT OF STOCK ON TYCO CATALOGS, SEND 25¢ TO DEPT. CTC, TYCO, WOODBURY HEIGHTS, N.J. 08097
IT'S SO MUCH MORE FUN TO OWN THE VERY BEST

Tyco Ad - 1966

2016 LOS ANGELES DIVISION DIRECTORY

Division Superintendent - Michael O'Brien

1070 N. Marengo Ave. Pasadena CA. 91103
(626) 798-7087 mikeobrien@corbu.us

Division Director - Pat Raymer

2655 El Caminito La Crescenta, CA 91214
(818) 957-7351 membership@ladiv-nmra.org

Convention Chairman - Carl Heimberger

1256 Old Hickory Rd., Corona Ca. 92882
Cell: (951) 256-1319. cjheimberger@gmail.com

Chief Clerk/Paymaster - James Keena

12341 Heritage Springs Drive
Santa Fe Springs, CA 90670
Cell: (562) 325-3846 pjkeenawhittier@msn.com

Membership - Ron Varnell

2741 Plaza del Amo. #213 Torrance, CA 90505
310-213-1697 brassrr844@aol.com

Member Aid Chairman - Lloyd Lehrer

401 9th St. Manhattan Beach, CA 90266
(310) 951-9097 lloydlehrer@gmail.com

L.A. Coupler Editor - Scott Sackett

1264 Alameda Ave. Glendale CA. 91201
(818) 846-1735 essaness@pacbell.net

L. A. Division Webmaster - Tim Johnson

10859-1/2 Kling St. North Hollywood CA 91602
(818) 634-8389 airplanedad@yahoo.com

Achievement Chair - Michael O'Brien

1070 N. Marengo Ave. Pasadena CA. 91103
(626) 798-7087 mikeobrien@corbu.us

Raillette - Chair - Annette Palmer

1107 S Pine Dr. Fullerton, CA 92833
(714) 686-6502 catsandy2000@sbcglobal.net

Flagstop - Lindsay Smith

909-599-0182 wlindsays31@verizon.net

please also refer to: PSR Dispatch 1446 Paseo Gracia San Dimas, CA 91773-3915

Business/Circulation Manager position is VACANT



NATIONAL MODEL RAILROAD ASSOCIATION, INC ®

P.O. Box 1328
 Soddy Daisy, TN 37384-1328
 Phone: (423) 892-2846 Fax: (423) 899-4869
 Email: nmraops@nmra.org Website: www.nmra.org

RENEWAL NOTICE

NMRA Membership Type	1 Year	Total
Member with NMRA Magazine Subscription ~ All Rights and Benefits; includes NMRA Magazine	\$ 66.00	
Member without NMRA Magazine Subscription ~ All Rights and Benefits; does not include NMRA Magazine	\$ 44.00	
Family ~ Spouse or minor child of above member in good standing; DOES NOT include NMRA Magazine or voting rights. Provide member's name below. Name: _____ DOB: _____	\$ 9.00	
Student ~ Anyone under 18 years or student between 19-25 years of age All rights and benefits and includes NMRA Magazine. DOB: _____	\$ 32.00	
Sustaining ~ Mandatory for group memberships (Clubs, Associations, Businesses) All Rights and Benefits and includes NMRA Magazine.	\$110.00	

Region Subscription Options For Member					
Circle the option of your Choice					
Subscription Type	1 Yr	Total	Subscription Type	1 Yr	Total
21 ~ Northeastern Subscription	\$ 7.00		30 ~ Mid Eastern Subscription	\$ 9.00	
23 ~ North Central Subscription	\$10.00		33 ~ South Eastern Subscription	\$10.00	
24 ~Thousand Lakes Subscription	\$10.00		36 ~ Sunshine Subscription	\$10.00	
26 ~ Pacific Coast Subscription	\$ 8.00		* ~ Out of regions subscriptions may be charged additional fees by Region		
28 ~ Midwest Subscription	\$ 6.00				

Contact Info	Phone: _____
Contact Info	E mail: _____

PAYMENT	NMRA Membership Total:	\$
PAYMENT	Regions Subscription Total:	\$
PAYMENT	Merchandise Order Total:	\$
PAYMENT	PLEASE INCLUDE SHIPPING	\$
PAYMENT	Donation Amount:	\$
PAYMENT	Grand Total:	\$

Go to the NMRA website at www.nmra.org and visit the online store for the latest merchandise updates
 We also accept MasterCard, Visa, American Express and Discover

Credit Card No.

 Verification Code

Expiration Date:

 Signature _____

Return entire renewal notice along with your payment • All Payments must be made in U.S. FUNDS ONLY • Make checks payable to NMRA



MODEL TRAIN & RAILROAD EVENTS:

August (2016)

- 13th **San Diego Division Summer Meet**, Vista CA.
- 13th - 14th **Tehachapi Loop Railroad Club**. Sat 1000 to 1700, Sun 1000 to 1600. Free,
Tehachapi Valley Parks & Recreation, Gymnasium at West Park, 410 West D Street,
Tehachapi, CA 93561 http://www.tlrc.club/model-train-shows/tlrc_club@hotmail.com
(tlrc_club AT hotmail DOT com) www.tehachapilooprailroadclub.org
- 17th **Electric Railway Historical Association of Southern California** ERHA Meeting,
South Pasadena Library Community Center at 1015 El Centro Street,
- 20th **San Diego Model RR Museum Swap Meet**, San Diego
- 20th - 21st **South Coast RR Museum's Goleta Railroad Days**, Goleta
- 21st **Pacific Southwest Railway Museum** "Engineer-For-An-Hour", Campo
- 27th **Santa Susana Railroad Historical Society Swap Meet**, Simi Valley
7:00am to 10:00am Santa Susana Park Pavilion. 6503 Katherine Road, Simi Valley, CA.
Link to map: <http://tinyurl.com/ptbo8zm> . Vendor table info, contact
David Putnam, (661) 753-6006 or email: events@santasusannadepot.org
<http://www.santasusannadepot.org/Clubhome.html>
Open House starts at 10:00 a.m. to 4:00 p.m.
- 27th **Train Collectors Association/Western Division Meet**, 1000 to 1330.
Arcadia Senior Center, 405 S Santa Anita Ave., Arcadia,
- 28th **T.T.O.S. Southern Pacific Division Meet**, Anaheim, CA

September

- 2nd - 5th **Chula Vista Live Steamers Fall Meet**, Chula Vista, CA
- 2nd - 25th **L.A. County Fair**, see G Scale Garden Railway
- 4th **Pacific Southwest Railway Museum** "Engineer-For-An-Hour", Campot
- 10th **Orange Empire Railway Museum** OERM Fall Swap Meet
- 10th **San Diego Division Layout Tour**
- 10th - 11th **High Desert Modular Model Railroad Club Show**, Newhall
- 11th **T.T.O.S. Southwestern Division Train Show/Swap Meet**, Arcadia, CA
- 15th **PSR Dispatch** Deadline
- 16th **San Diego Model RR Museum Screening**: "Routine Pleasures", San Diego
- 16th **Electric Railway Historical Association of Southern California** ERHA Meeting,
South Pasadena Library Community Center at 1015 El Centro Street.
- 18th **Pacific Southwest Railway Museum** "Engineer-For-An-Hour", Campo
- 21st - 25th **PSR/NMRA Regional Convention**, Culver City, CA
- 25th **Model Railroads of Southern California Layout Tour Southern California**
Info: [chiefbobbb\(AT\)Verizon.\(DOT\)Net](mailto:chiefbobbb(AT)Verizon.(DOT)Net).
- 21st - 25th **Southern Pacific Historical & Technical Society Convention**, Palm Springs
Info: Ed Hall spedsd45@yahoo.com
- 22nd - 26th **Orange County Model Engineers Fall Meet**, Costa Mesa
- 24th **Train Collectors Association/Western Division Meet**, 1000 to 1330.
Arcadia Senior Center, 405 S Santa Anita Ave., Arcadia, CA.
<http://tcawestern.org/INDEX.HTM> <http://tcawestern.org/about.htm>
- 25th **Model Railroads of Southern California Layout Tour**, Southern California
- 25th **T.T.O.S. Southern Pacific Division Meet**, Anaheim, CA

MODEL TRAIN & RAILROAD EVENTS:



October (2016)

- 1st - 2nd **Los Angeles Model Railroad Society (LAMRS) Open House**, 10:00am to 4:00pm.
14005 Crenshaw Blvd, Unit G (Upstairs), in Hawthorne, CA 90250
www.LAMRS.org
- 2nd **T.T.O.S. Southwestern Division Train Show/Swap Meet**, Arcadia, CA
- 6th - 9th **Model Railroads of Southern California Layout Tour**,
San Luis Obispo & Northern Santa Barbara Counties
- 7th - 9th **Central Coast Railroad Festival**, San Luis Obispo &
Northern Santa Barbara Counties
- 8th **San Diego Div. PSR NMRA Layout Tour**
- 15th **Roger & Faith Clarkson Garden RR Open House**, Riverside
- 15th **Roundhouse Gang MRC Train-Station Swap Meet**. 8:00am to 11:30am.
Set up start 6:30am. 1170 W 3rd St. San Bernardino, CA
- 15th - 16th **Renaissance Festival & Model Train Show**, California City
- 15th - 16th **Orange Empire Railway Museum (OERM)**
PEANUTS™ The Great Pumpkin Patch Express
Trains depart the museum depot at 10:00, 12:00, 2:00 & 4:00.
Tickets are \$15 for children (ages 2-11) and \$25 for adults.
For reservations, please call 951-943- 3020 or visit www.oerm.org.
- 15th - 16th **Joint Open Houses of Belmont Shore Lines (N) and Angels Gate Hi-Railers (O)**
10 am to 4 pm. Swap meet Saturday only, 8 am to Noon. All events free.
Angeles Gate Park, 3601 S. Gaffey St., San Pedro, CA
Contact Bill Costley, bbcostley@earthlink.net or 310-831-1140
- 21st **Electric Railway Historical Association of Southern California ERHA Meeting**,
South Pasadena Library Community Center at 1015 El Centro Street,
- 22nd **Santa Susana Railroad Historical Society Swap Meet**, Simi Valley
7:00am to 10:00am Santa Susana Park Pavilion. 6503 Katherine Road, Simi Valley, CA.
- 22nd - 23rd **Orange Empire Railway Museum (OERM)**
PEANUTS™ The Great Pumpkin Patch Express
Trains depart the museum depot at 10:00, 12:00, 2:00 & 4:00.
Tickets are \$15 for children (ages 2-11) and \$25 for adults.
For reservations, please call 951-943- 3020 or visit www.oerm.org.
- 23rd **T.T.O.S. Southern Pacific Division Meet**, Anaheim, CA
- 28th - 29th **Freight Fright, NMRA LA Division Fall Meet**, South Coast Botanical Gardens.
- 28th - 30th **Joshua Tree & Southern Railroad Museum 15", 7 1/2" G gage**.
Season Opener Work Weekend, 8901 Willow Lane, Joshua Tree, CA:
<http://www.jtsrr.org/home.html>
- 29th **Train Collectors Association/Western Division Meet**, 1000 to 1330.
Arcadia Senior Center, 405 S Santa Anita Ave., Arcadia, CA.
<http://tcawestern.org/INDEX.HTM> <http://tcawestern.org/about.htm>



MODEL TRAIN & RAILROAD EVENTS:

November (2016)

- 2nd, 5th, 6th **67th Annual Open Highland Park Society of Model Railroad Engineers, Inc.**
Sat. & Sun Noon to 5:00pm; Wed 7:00pm - 10:00pm.
854 E Broadway, San Gabriel, CA 91776 <http://www.highlandpacifcrr.com>
- 5th - 7th **Glendale Model Railroad Society Fall Open House** 619 Hahn Ave. Glendale CA.
Saturday Nov 5th 1:00pm to 4:00pm / 5:30pm - 8:30pm
Sunday Nov 6th 1:00pm to 4:00pm
Monday Nov 7th 7:30pm to 10:00pm <http://www.gmrrc.org/>
- 5th - 6th **Orange Empire Railway Museum Day Out with Thomas, Perris, CA**
Advance tickets are recommended. Early Bird Special purchase your tickets before September 1st and save! Tickets may be purchased online at; www.ticketweb.com For more information call the museum office at 951-943-3020
- 6th & 8th **Slim Gauge Guild Open House, Pasadena**
<http://www.slimgaugeguild.com/>
- 11th - 14th **Joshua Tree & Southern Railroad Museum 15", 7 1/2" G gage.**
36th Annual Rudy Run, 8901 Willow Lane, Joshua Tree, CA:
<http://www.jtsrr.org/home.html>
- 12th **San Diego Div. NMRA Fall Meet**
- 12th **Coachella Valley Model Railroaders Open House, Indio, CA**
- 12th - 13th **California Southern Model Railroad Club Open House, Norwalk, CA**
- 12th - 13th **Tehachapi Loop Railroad Club.** Sat 1000 to 1700, Sun 1000 to 1600. Free,
Tehachapi Valley Parks & Recreation, Gymnasium at West Park,
410 West D Street, Tehachapi, CA 93561
http://www.tlrc.club/model-train-shows/tlrc_club@hotmail.com
[tlrc_club AT hotmail DOT com] www.tehachapilooprailroadclub.org
- 13th **Fairplex Garden Railroad Open House.** G Scale, Free. Parking near Gate 1,
1101 W. McKinley Avenue, Pomona, CA. gardenrailroad@fairplex.com
[gardenrailroad AT Fairplex DOT com] 909-865-4315
- 15th **California Southern Model Railroad Club Open House, Norwalk, CA**
- 15th **PSR Dispatch Deadline**
- 16th **Coachella Valley Model Railroaders** bi-annual model train exhibit. Free.
Riverside County Fair National Date Festival grounds, 82503 Highway 111,
Indio, CA 92201 10 am to 2 pm rain or shine. www.cvmrr.com or jim@cvmrr.com or
www.facebook.com/cvmrr Contact Jim at 760-318-5602 from 9 am to 4 pm
for additional information
- 18th **Electric Railway Historical Association of Southern California ERHA Meeting,**
South Pasadena Library Community Center at 1015 El Centro Street,
- 18th, 19th **Cal-Stewart Meet,**
- 20th Pomona, CA.
- 19th **Roger & Faith Clarkson Garden RR Open House, Riverside**
- 19th - 20th **Pasadena Model Railroad Club Open House** Sat 1300 to 1700; Sun 1900 to 2100
- 24th - 27th **Joshua Tree & Southern Railroad Museum 15", 7 1/2" G gage.**
Turkey Run Weekend, 8901 Willow Lane, Joshua Tree, CA: <http://www.jtsrr.org/home.html>
- 25th - 26 **Pacific Southwest Railway Museum "North Pole Limited Santa Trains",**
Campo, CA. Tickets for the North Pole Limited must be purchased in advance.
<https://www.psrn.org/npl/>

MODEL TRAIN & RAILROAD EVENTS:



December (2016)

- 2nd - 4th **Orange Empire Railway Museum** OERM: Train to Santa's Workshop
9th - 11th Train times: 11:00, 1:00, 3:00, 5:30 & 7:00 on Saturday and Sunday and 5:30 & 7:00 on Friday.
16th - 18th Trains fill up fast. So it is advised to call the museum for reservations.
 Prices are ages 12 and up, \$20; ages 2-11, \$15, 951-943-3020 or visit www.oerm.org
- 2nd - 3rd **Pacific Southwest Railway Museum** "North Pole Limited Santa Trains",
9th - 10th Campo, CA. Tickets for the North Pole Limited must be purchased in advance.
16th - 17th <https://www.psrn.org/npl/>
- 3rd **All Gauge Toy Train Association Meet & Open House**, El Cajon
4th **T.T.O.S. Southwestern Division Train Show/Swap Meet**, Arcadia
10th **San Diego Division Event**, Location TBA
11th **Fairplex Garden Railroad Open House**. G Scale, Free. Parking near Gate 1,
 1101 W. McKinley Avenue, Pomona, CA. gardenrailroad@fairplex.com
 [gardenrailroad AT Fairplex DOT com] 909-865-4315
- 11th **San Luis Obispo Model RR Assn.** Event, Arroyo Grande
12th **Poway Station Christmas in the Park**, Poway, CA
16th **Electric Railway Historical Association of Southern California** ERHA Meeting,
 South Pasadena Library Community Center at 1015 El Centro Street,
17th **Train Collectors Association/Western Division Meet**, 1000 to 1330.
 Arcadia Senior Center, 405 S Santa Anita Ave., Arcadia, CA.
 <http://tcawestern.org/INDEX.HTM> <http://tcawestern.org/about.htm>
- 17th **Roger & Faith Clarkson Garden RR Open House**, Riverside
18th **T.T.O.S. Southern Pacific Division Holiday Open House**, Anaheim, CA
30th - 31st **Joshua Tree & Southern Railroad Museum** 15", 7 1/2" G gage.
1st New Years Weekend, 8901 Willow Lane, Joshua Tree, CA:
 <http://www.jtsrr.org/home.html>



2017

January

- 14th **San Diego Division Event**, Location TBA
7th & 8th **The Great Train Show**. Anaheim Convention Center,
 800 W. Katella Ave., Anaheim, CA 92802-3415 Anaheim, CA
 <http://www.greattrainexpo.com/>
30th **La Mesa Club in San Diego Railroad Museum** will hold its TT&TO 1950's Operating Session

February

- 7th - 8th **Great Train Expo**, Del Mar, CA 1000 to 1600. Del Mar Fairgrounds,
 2260 Jimmy Durante Blvd., Del Mar, CA 92014-2216 <http://www.greattrainexpo.com/>
11th **San Diego Division Event**, Location TBA
11th - 12th **World's Greatest Hobby on Tour**, Pomona
25th **Roundhouse Gang Swap Meet**, San Bernardino (Tentative Date)



MODEL TRAIN & RAILROAD EVENTS:

March (2017)

4th - 5th *Golden Empire Historical & Modeling Society Train Show*, Bakersfield
11th *San Diego Division Event*, Location TBA

April

8th *San Diego Division Event*, Location TBA
19th - 23rd *NMRA PCR Convention "Daylight Express."* Double Tree by Hilton,
3100 Camino Del Rio Court, Bakersfield CA <http://www.pcrnmra.org/conv2017/>

May

6th - 7th *Railroad Days*, Fullerton
13th *San Diego Division Event*, Location TBA

July

30th /Aug 6th *NMRA Convention*, Orlando, FL.

September

13th - 16th *NMRA PSR Convention*, Ontario, CA

October

28th - 29th *NMRA LA Division Freight Fright*. South Coast Botanical Gardens



2018

March

3rd - 4th *Golden Empire Historical & Modeling Society Train Show*, Bakersfield

July

30th /Aug 6th *NMRA Convention* Kansas City MO

August 2016 Great Train Show in Pomona.



Bob DeMoss, James Keena, Mona & Pat Raymer attending the Great Train Show in Pomona to promote the upcoming 2016 PSR Convention - "LA Junction."

